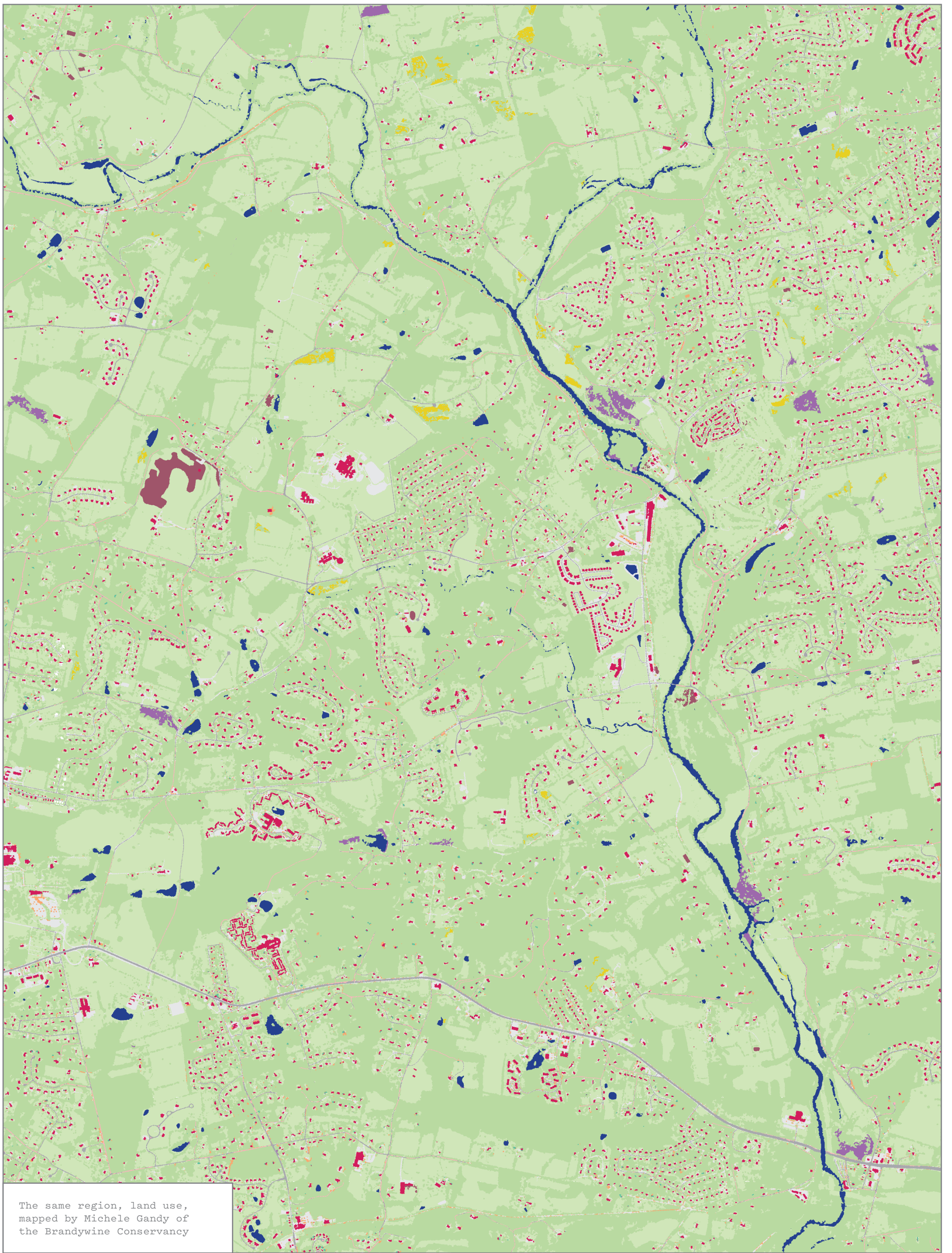


DOWNSTREAM TRANSMISSION

Route, Water and Flood Information, and Historic Sites

- | | | |
|-----------------------|------------------------------------|----------------------------------|
| ■ Access points | ① Brinton's Mill | ⑧ Trimbleville Historic District |
| ▲ Tree planting | ② Charch, William Hale, House | ⑨ Pocopson Station |
| ● Historic resources | ③ Darlington Farm, Hillscrest Farm | ⑩ Brinton, George, House |
| — Roads | ④ Lenape Bridge | ⑪ Painter, Joseph, Farm |
| ● Water bodies | ⑤ Hance, Joseph, House & Barn | ⑫ Northbrook Historic District |
| ○ 100-year floodplain | ⑥ Brinton, Edward, House | ⑬ Wilkinson House |
| ● Protected lands | ⑦ Derbydown Homestead | |



Map of the Brandywine between Northbrook and Chadds Ford, indicating land cover

- | | |
|--|--|
| ● Water | ● Structures |
| ● Wetlands | ● Other impervious surfaces |
| ● Tree canopy | ● Roads |
| ● Low vegetation | ● Tree canopy over structures |
| ● Scrub-Shrub | ● Tree canopy of other impervious surfaces |
| ● Barren | ● Tree canopy of roads |