

East-West Bicycle and Pedestrian Facilities Plan



Project Kick-Off

Presentation to Board of Supervisors

West Brandywine Township on April 6, 2017

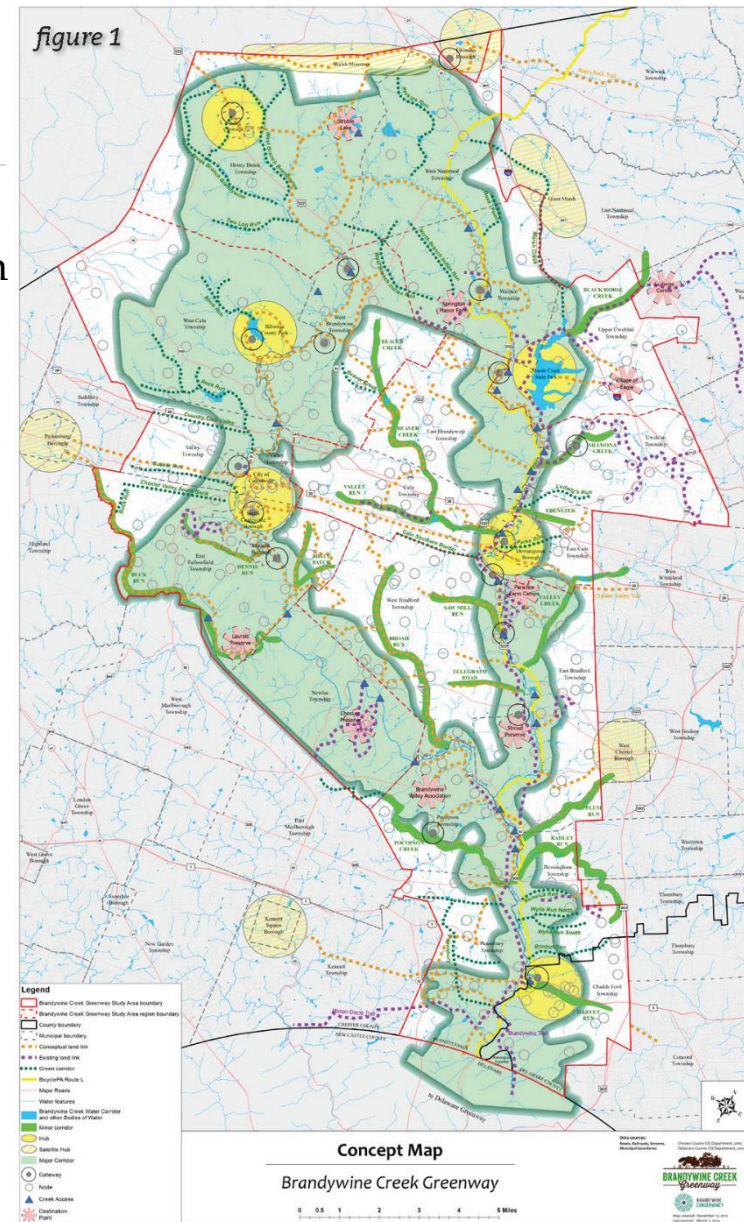
Uwchlan Township on April 10, 2017

East Brandywine Township on April 19, 2017

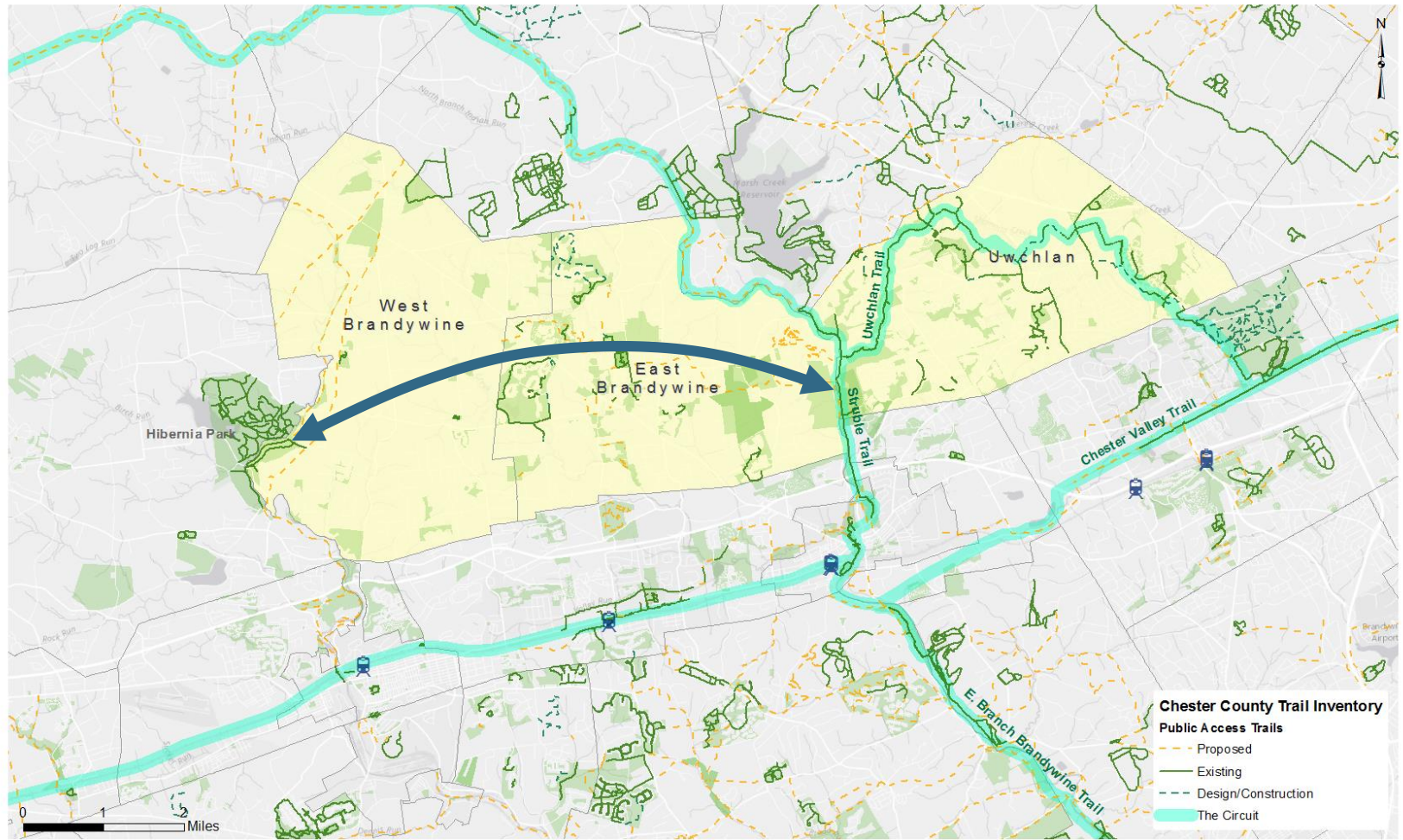


Background

- 2005 ● West Brandywine Township Comprehensive Plan
- 2009 ● East Brandywine Township Comprehensive Plan
- 2011 ● East Brandywine Township Official Map
- 2014 ● Brandywine Greenway Strategic Action Plan
- 2015 ● East Brandywine Trails Committee
- 2016 ● West Brandywine Trails Commission
- 2017 ● East-West Bicycle and Pedestrian Facilities Plan



Project Overview



Service Layer Credits: Esri, HERE, DeLorme, MapmyIndia, © OpenStreetMap contributors, and the GIS user community, DVRPC, Chester County

Project Overview

❑ Sponsor Municipalities and Study Area

East Brandywine Township – *Lead*

West Brandywine Township

Uwchlan Township

❑ Consultant Team

McMahon Associates, Inc. – *Prime*

Brandywine Conservancy – *Sub-consultant*

❑ Budget and Funding

Chester County Vision Partnership Program (VPP) Grant	\$ 35,000
---	-----------

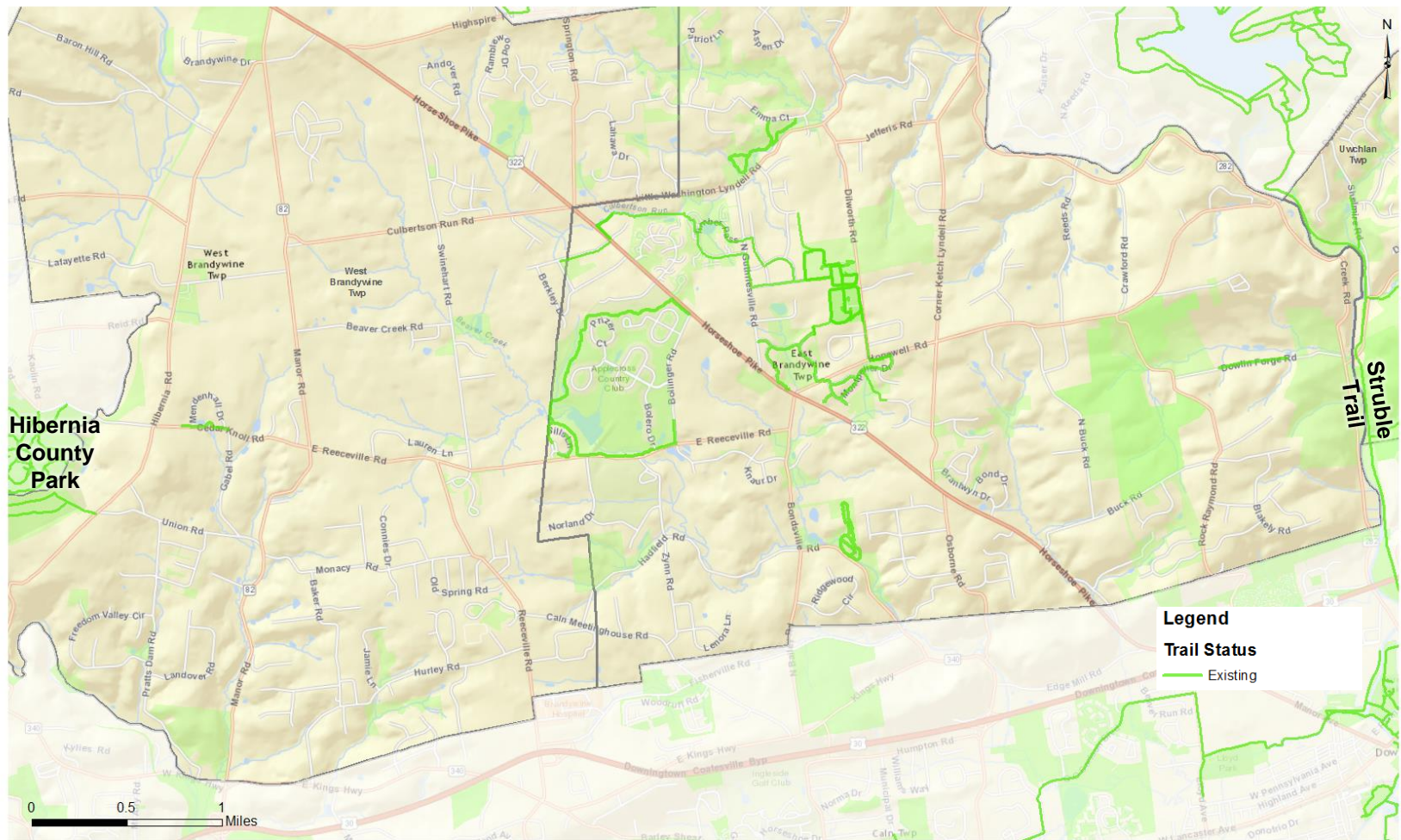
East Brandywine Township Match	\$ 7,000
--------------------------------	----------

West Brandywine Township Match	\$ 7,000
--------------------------------	----------

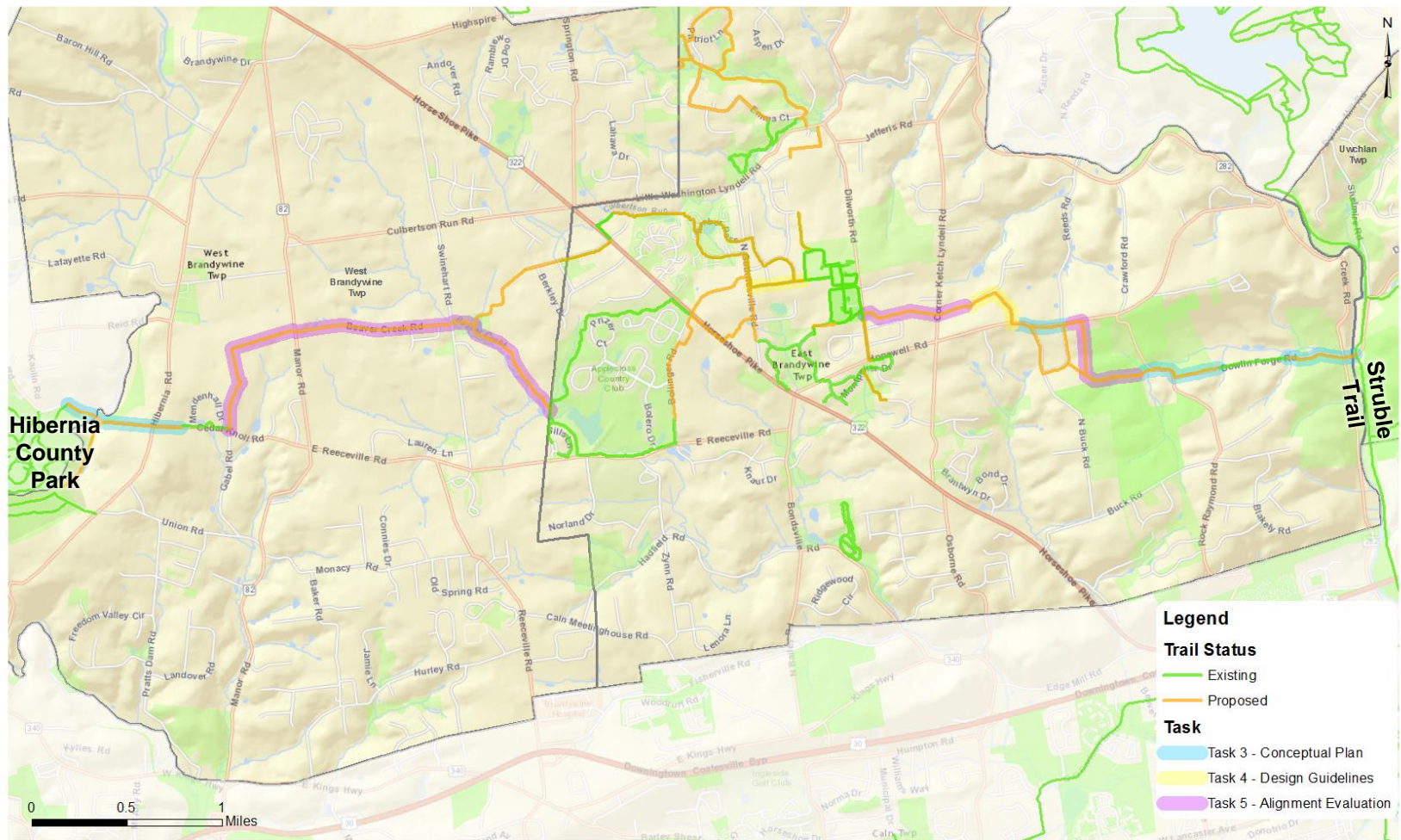
Uwchlan Township Match	\$ 1,000
------------------------	----------

Total	\$ 50,000
--------------	------------------

Scope of Work



Scope of Work



Service Layer Credits: Sources: Esri, HERE, DeLorme, USGS, Intermap, increment P Corp., NRCAN, Esri Japan, METI, Esri China (Hong Kong), Esri (Thailand), TomTom, MapmyIndia, © OpenStreetMap contributors, and the GIS User Community, DVRPC, Chester County, Brandywine Conservancy

Project Overview

□ Scope of Work

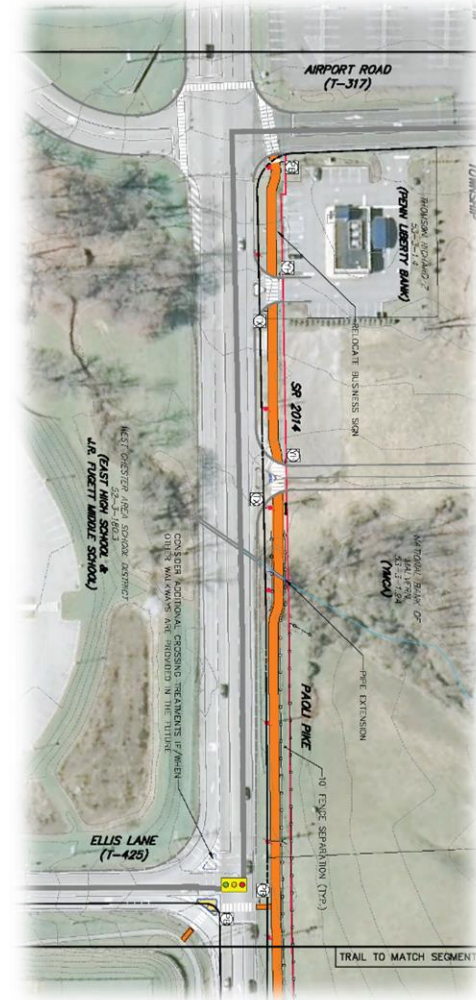
- Bicycle & Pedestrian Conceptual Plans
- Shared Roadway Design Guidelines
- Alignment Evaluation & Property Owner Engagement



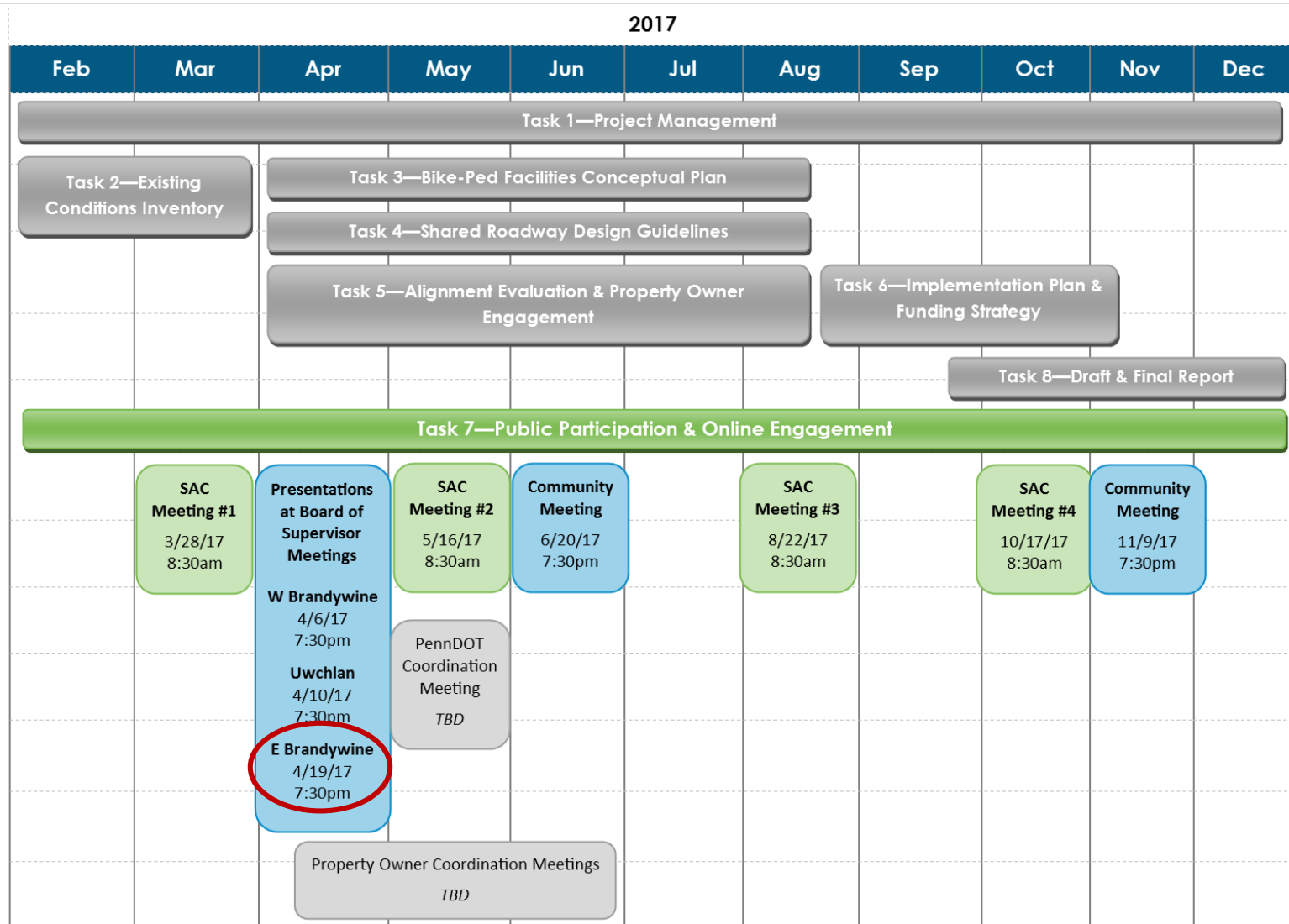
Implementation Plan & Funding Strategy

Draft & Final Report

Guided by Stakeholder and Community Input



Schedule



Study Advisory Committee

Luke Reven	East Brandywine Township
------------	--------------------------

Michael Wagoner	East Brandywine Township
-----------------	--------------------------

Katie Chruchill	Uwchlan Township
-----------------	------------------

Joe Laird	Uwchlan Township
-----------	------------------

Dale Barnett	West Brandywine Township
--------------	--------------------------

John Cassels	West Brandywine Township
--------------	--------------------------

Advisory Members and VPP Grant Monitors

Rachael Griffith	Chester County Planning Commission
------------------	------------------------------------

Jeannine Speirs	Chester County Planning Commission
-----------------	------------------------------------

Bicycle and Pedestrian Facilities Toolbox






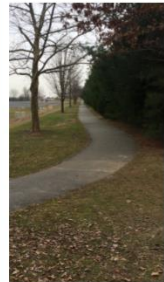






	On-Road				Off-Road			
	Shoulder/Striping	Advisory Shoulder	Shared Lane	Bike Lane	Path <i>Natural Surface</i>	Path <i>Improved Surface</i>	Sidewalk	Multi-Use Trail
User	Multi-Use		Bike			Pedestrian		Multi-Use
Description	Paved shoulder with signage, striping, or coloring to designate use by bicyclists or pedestrians, particularly when other dedicated facilities are not feasible or provided.	Paved shoulder with signage and striping offering a prioritized space for people to bicycle and walk on roadways with low to moderate traffic volumes. A two-way center travel lane is provided for motorized vehicles.	Roadway with travel lanes that are shared by both vehicles and bicycles. Signage and striping, such as sharrows or bicycle boulevard treatments, can be used to designate the shared lane.	Portion of the roadway at least 5' wide and designated for exclusive use by bicyclists with pavement markings and possibly signage.	Pathway that is intended for use by pedestrians to connect various destinations. A natural finish	Pathway that is intended for use by pedestrians to connect various destinations.	Concrete pathway parallel to the road that is intended for use by pedestrians with numerous access points to adjacent land uses.	Paved pathway at least 8' wide that is used by both bicyclists and pedestrians.
Surface Materials	Asphalt (roadway)	Asphalt (roadway)	Asphalt (roadway)	Asphalt (roadway)	Grass Dirt Mulch	Crushed Stone Asphalt	Concrete	Crushed Stone Asphalt
Width	4' minimum	> 4' 6' preferred	13' - 14'	5' - 6'	< 8' 4' - 6' typical	< 8' 6' typical	5' - 6' 4' permissible	10' - 12' 8' permissible
								

Photo credit: CCPC

Crossings Toolbox

High Visibility Marked Crosswalk	Rectangular Rapid Flash Beacon (RRFB)	Overhead Flashing Beacon	Traffic Signal
<p>Pavement markings designating a location for pedestrians to cross a road at signalized or unsignalized locations.</p> <p>High visibility crosswalks, also known as continental design, are most visible to motorists and can be supplemented with fluorescent advanced-warning signs and/or beacons.</p>	<p>User-activated LED rapid flashing beacon used in combination with pedestrian crossing signs and marked crosswalk at uncontrolled crossing locations. Signs provided on both sides of an uncontrolled marked crosswalk and facing both directions of oncoming traffic.</p>	<p>User-activated flashing amber warning lights installed on overhead mast arms with supplemental signs and marked crosswalks at uncontrolled crossing locations.</p>	<p>User-activated pedestrian signal head and marked crosswalk at a signalized intersection and coordinated with vehicular movements.</p>
			

Next Steps

- ❑ Develop Draft Conceptual Plans
- ❑ Develop Options for Shared Roadway Facilities
- ❑ Initiate Property Owner Coordination
- ❑ Community Workshop
 - June 20, 2017
 - 6:30pm to 8:30pm with a presentation at 7:30pm
 - East Brandywine Township Building

East-West Bicycle and Pedestrian Facilities Plan **COMMUNITY WORKSHOP**

Date
June 20, 2017

Time
Open House - 6:30pm to 8:30pm
Presentation - 7:30pm

Location
East Brandywine Township Building
1214 Horseshoe Pike
Downingtown, PA 19335



Give your input on plans to provide bicycle and pedestrian facilities that connect the Struble Trail, Hibernia County Park, and other destinations in Uwchlan, East Brandywine, and West Brandywine Townships.



For additional information, contact: Natasha Manbeck, Project Manager, McMahon Associates, Inc., (610) 594-9995, nmanbeck@mcmahonassociates.com

QUESTIONS



Natasha Manbeck, P.E., AICP

Project Manager

McMahon Associates, Inc.

nmanbeck@mcmahonassociates.com

(610) 594-9995

Sheila Fleming, ASLA

Senior Planner for Conservation Design

Brandywine Conservancy

SFleming@brandywine.org

(610) 388-8317