



BRANDYWINE MUSEUM OF ART

GUIDED MUSEUM TOUR OPTIONS

GUIDED MUSEUM TOURS

OFFERED:

Wednesday–Monday
9:30 a.m. and 3:15 p.m.*

LENGTH:

Approximately 1 Hour

PRICE:

\$18 per person

CAPACITY:

Minimum of 10

**Some tours offered seasonally
or during exhibition dates.*

CONTACT US

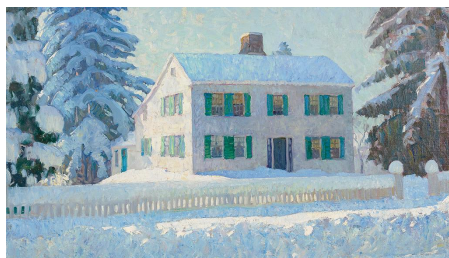
grouptours@brandywine.org
610-388-8328

www.brandywine.org/groups



BRANDYWINE TREASURES TOUR

New to the museum, or looking to see it all? The Brandywine Treasures Tour showcases the highlights of our collection devoted to American Art with a particular emphasis in art of the Brandywine region—landscape, still life, trompe l'oeil, illustration and work created by three generations of the Wyeth family.



BRANDYWINE HOLIDAY MAGIC

**Offered Nov 27, 2023–Jan 7, 2024
(excluding Dec 24–Jan 1)**

Come explore the enchanted world that is the Brandywine River Museum of Art during the holiday season. In addition to getting a Brandywine Treasures Tour, groups will learn more about the creation of thousands of whimsical Critters displayed on towering trees soaring up through the Museum's three-story atrium before ending their tour at our O-gauge model train display – a visitor favorite!



THREE GENERATIONS OF WYETHS TOUR

Internationally recognized for our collection of works by the Wyeth family, the Three Generations of Wyeths Tour explores the dynamic history and artistic legacy of N. C. Wyeth, Andrew Wyeth, and Jamie Wyeth, in addition to other members of their renowned family.

UPCOMING SPECIAL EXHIBITION TOURS

Andrew Wyeth · Home Places

February 4 – July 30, 2023

Joseph Stella · Visionary Nature

June 17–September 24, 2023

**Abstract Flash ·
Unseen Andrew Wyeth**

July 29, 2023–February 18, 2024

Jamie Wyeth · Unsettled

March 16 – June 9, 2024

**The Crafted World of
Wharton Esherick**

October 26, 2024 – January 19, 2025

For more information, visit
brandywine.org/museum/exhibitions

*Images (Clockwise from top left):
William Trost Richards, *The Valley of the Brandywine*,
Chester County (September) (detail), 1886–1887.
N. C. Wyeth, *Treasure Island*, endpaper illustration
(detail), 1911. N. C. Wyeth, *Zirngiebel House*,
Needham—Heavy Snow (detail), ca. 1922.*