

Appendix 7

Brandywine Flood Study

Website Materials

Draft Release - January 2025

PREPARED BY

Brandywine Conservancy

University of Delaware Water Resources Center

Chester County Water Resources Authority



BRANDYWINE
CONSERVANCY



Chester County Water Resources Authority

CHESTER COUNTY ~ PENNSYLVANIA



OUR WORK



Now Available: DRAFT Report of the Brandywine Flood Study

A draft report of the Brandywine Flood Study is now available for a 45-day public comment period through March 1, 2025.

- [Click here to view the DRAFT summary report.](#)
- [Click here to view the DRAFT technical report.](#)

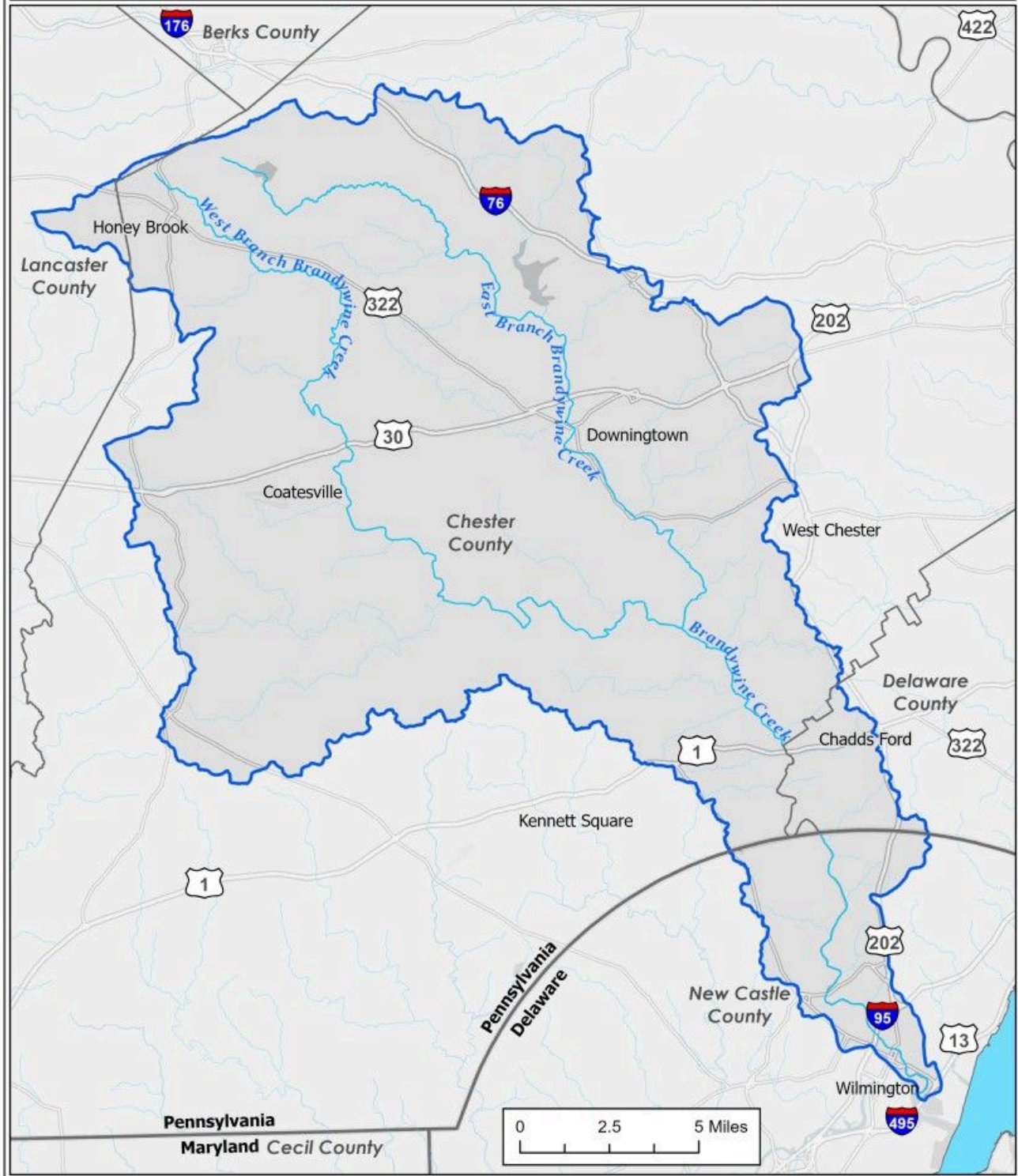
Comments on the draft report can be submitted online [by filling out this form.](#)

The final Brandywine Flood Study will be released in early April 2025. Questions? Contact floodstudy@brandywine.org.

About the Brandywine Flood Study

In response to more frequent and extreme flooding events impacting communities along the Brandywine Creek in both Pennsylvania and Delaware, the Brandywine Conservancy is excited to announce the launch of the Brandywine Flood Study—nearly two years after Hurricane Ida produced historic flooding that devastated the region. Conducted in partnership with the Chester County Water Resources Authority (CCWRA) and the University of Delaware Water Resources Center (UDWRC), the flood study is a coordinated effort to better understand where and why flooding occurs and identify the best approaches to protect our communities from future severe flooding events.

Brandywine Flood Study Coverage Area



Map of Brandywine Flood Study coverage area

The study will examine flood reduction to the main stem of the Brandywine Creek from the headwaters in Honey Brook, PA, to Wilmington, DE and key tributaries. The study will identify chronic flood sites, develop hydrologic and hydraulic watershed models using the U.S. Army Corps of Engineers' Hydrologic Engineer

Center’s River Analysis System (HEC-RAS), and provide recommendations for structural and nonstructural flood solutions. This work will provide a deeper understanding of what contributes to the flooding of the Brandywine Creek and what can be done to mitigate those measures.

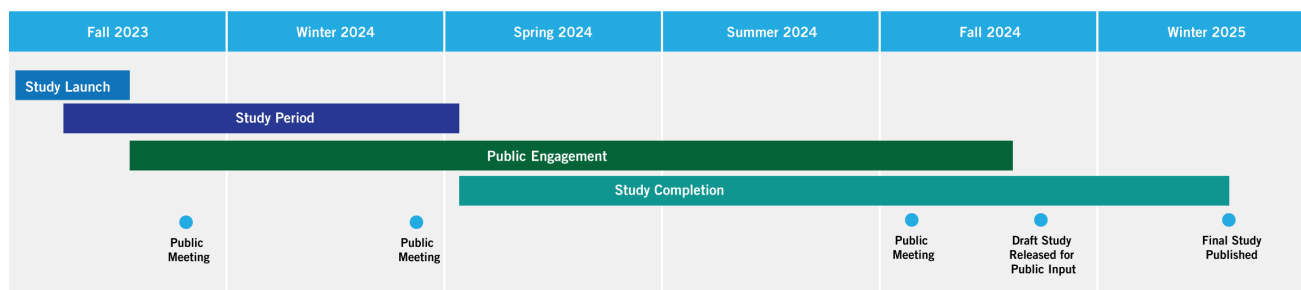
Once the flood study is completed, the partners are committed to working with impacted communities, elected officials, key funders, and government agencies to implement the study’s recommendations so that the watershed and its residents in both states are better prepared, protected and equipped to rebound from future severe flooding events.

[Click here for Flood Study FAQs](#)

Flood Study Main Goals

- Reduce flooding to main stem of the Brandywine Creek in Pennsylvania and Delaware
- Coordination with Delaware flood mitigation efforts
- Identify projects for flood attenuation, including pilot projects on Brandywine Conservancy-owned properties that may serve as models for watershed-wide sites

Project Tasks and Timeline



Upcoming Public Meetings

****Additional public meetings to discuss the draft report of the Brandywine Flood Study coming soon in 2025!****

- Fall 2023 – December 14, 2023, 6–7 p.m., Downingtown Borough Hall
- Winter 2024 – February 8, 2024, 6–7:30 p.m., Brandywine Museum of Art — [Click here for the audio recording of this meeting](#)
- Spring 2024 – March 5, 2024, 6–7:30 p.m., Coatesville City Hall — [Click here for the audio recording of this meeting](#)

- Spring 2024 – Chadds Ford Township Residents – March 18, 2024, 6–7 p.m., Chadds Ford Township Building, 10 Ring Rd, Chadds Ford PA 19317
- Spring 2024 – Wilmington, DE Residents – May 9, 2024, 6:30–8:30 p.m., UrbanPromise Rick's Rock Servant Leadership Center, 1000 E. 28th Street, Wilmington, DE 19802

To be informed about upcoming public meetings, please [click here to join our email list](#).

Help us spread the word! [Click here to access our Flood Study Communications Toolkit](#) for shareable resources about the flood study and public input tools, including printable flyers, digital graphics, promotional copy, and more.

Project Partners

Led by:



Additional partners include:

Stroud Water Research Center, West Chester University, Meliora, Biohabitats, and CDM Smith.

Funders

The Brandywine Flood Study is funded through grants from FEMA, PEMA, Chester County Government and Delaware County Council.



Contact Us!

For more information about the Brandywine Flood Study, including progress updates and notifications about upcoming public meetings, [click here to join our email list](#). You can also contact us directly with any questions at floodstudy@brandywine.org.

Header image: Courtesy of City of Wilmington Department of Public Works



**BRANDYWINE
CONSERVANCY**

1 Hoffman's Mill Road

P.O. Box 141

Chadds Ford, PA 19317

📞 610.388.2700

Contact Us

The Brandywine Conservancy is a program of [The Brandywine Conservancy & Museum of Art](#)

ABOUT

BLOG

PRESS ROOM

PRIVACY INFORMATION

Join Our Mailing List

enter email

