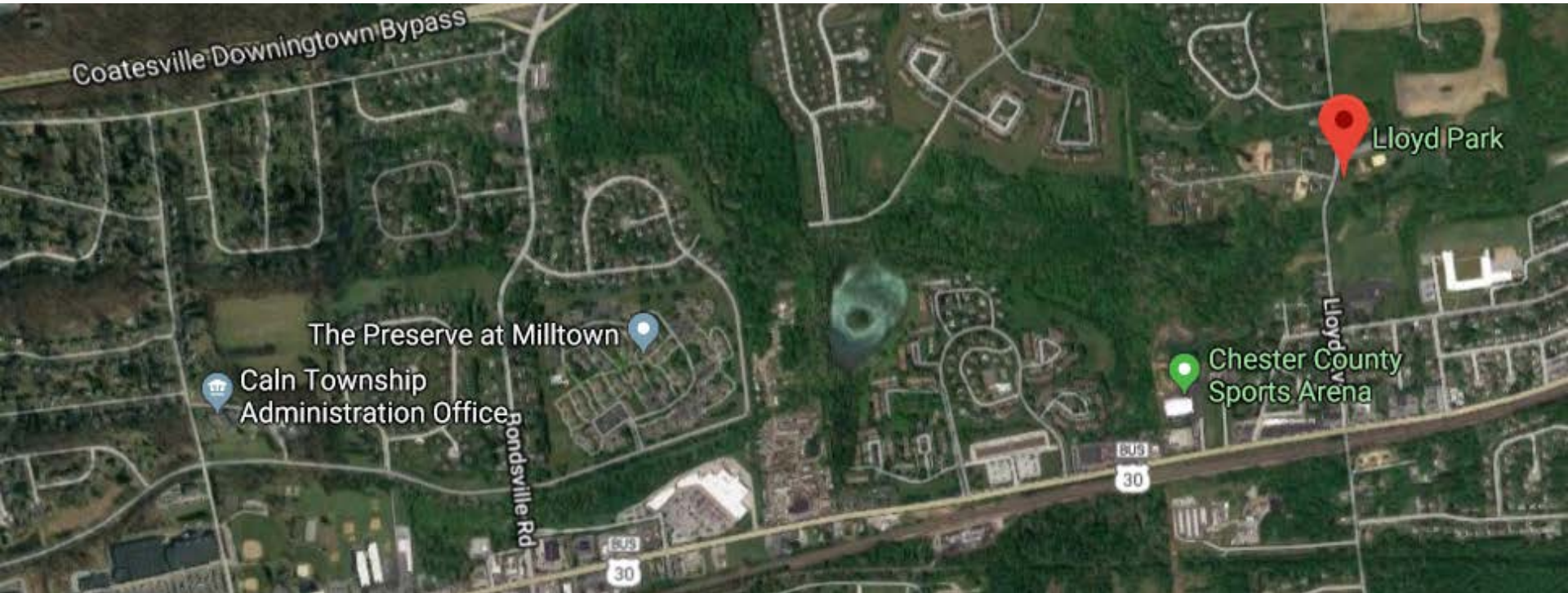


# Beaver Creek Trail Feasibility Study



## Community Workshop

May 28, 2019

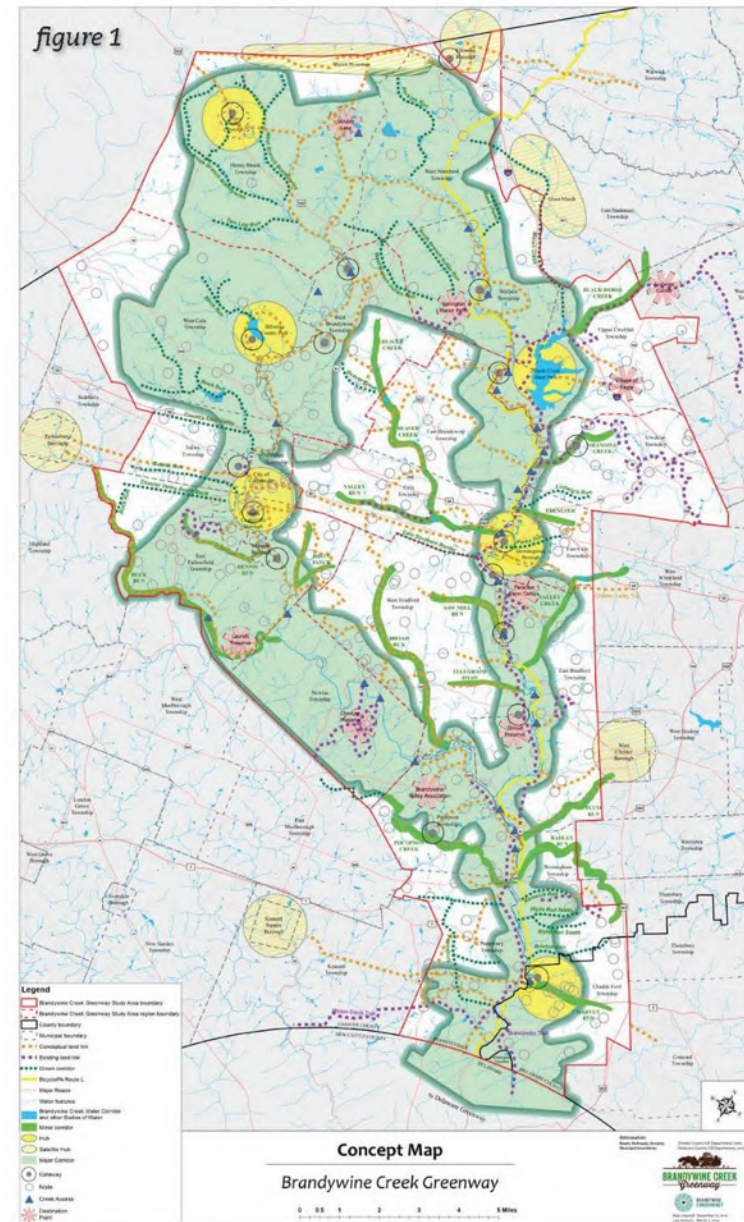


# Study Advisory Committee Members

- **John Caporale**, Caln Planning Commission
  - **George Chambers**, Caln Board of Commissioners
  - **Allan Cohen**, William Cohen & Sons
  - **Jamie DiDomenico**, Chester County Sports Arena
  - **Al Dimateo**, Lincoln Highway Committee
  - **Scot Gill**, Caln Township Wastewater Director
  - **Chuck Kramer**, Former Caln Township Commissioner
  - **Brett Klukan**, Caln Parks and Recreation
  - **George March**, Caln Township Civil Service Commission
  - **JoEllen McBride**, Caln Parks and Recreation
  - **Karen Sefton**, Wedgwood HOA
  - **Abbey Swan**, Caln Township Staff
- Consultant Team
- Rob Daniels, Brandywine Conservancy
  - Sheila Fleming, Brandywine Conservancy
  - Rachael Griffith, Chester County Planning Commission
  - Meredith Mayer, Brandywine Conservancy
  - Brian Styche, Chester County Planning Commission

# Background

- 2004 ● Lloyd Park Master Plan
- 2010 ● Caln Township Mobility and Connectivity Study
- 2014 ● Brandywine Creek Greenway Strategic Action Plan
- 2015 ● Caln Township Beaver Creek Staff Report
- 2017 ● Caln Township Comprehensive Plan
- 2018 ● Chester Valley Trail West Feasibility Study/Master Plan
- 2019 ● Beaver Creek Trail Feasibility Study





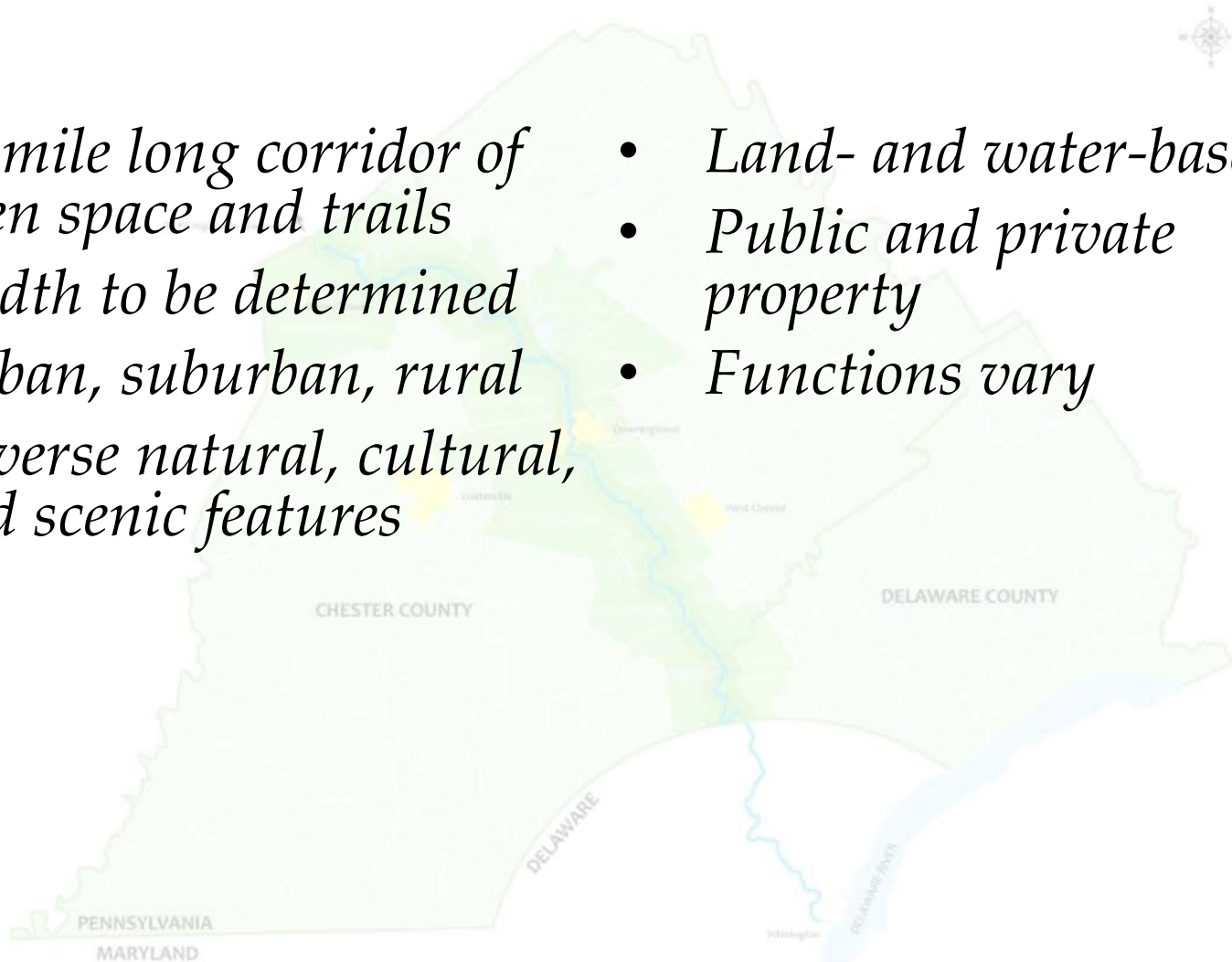
# BRANDYWINE CREEK GREENWAY



Copyright © 2014 Esri

# What constitutes the Greenway?

- *40 mile long corridor of open space and trails*
- *Width to be determined*
- *Urban, suburban, rural*
- *Diverse natural, cultural, and scenic features*
- *Land- and water-based*
- *Public and private property*
- *Functions vary*



# Partner Priorities

## Brandywine Creek Greenway

GREENWAY THEME MAPS	
NATURAL FEATURES	Preserve wetlands
	Enhance riparian
	Improve connectivity
	Control invasive species
OPEN SPACE AND RECREATION	Manage land use
	Promote state parks
	Foster trails
	Provide recreation
CULTURAL FEATURES	Buffer historic sites
	Preserve archaeological resources
	Preserve historic architecture

NOTE: ✓ Top six function

Zoning Adopted: 11/11  
Zoning Last Amended: N/A

### CURRENT RESOURCE PRIORITIES

#### 1. Steep Slopes (15-25%)

- ZO 155-36.B: Defines 15-25% slopes
- ZO 155-36.E: No more than 15% slope
- ZO 155-36.G: No more than 25% slope

#### 2. Woodlands: Somewhat

- ZO 155-37.A: Establish woodlands
- ZO 155-137.1B: For protection of woodlands
- ZO 155-37.1C: For protection of woodlands

#### 3. Wetlands: Rigorously

- ZO 155-35.A: Establish wetlands
- ZO 155-35.D: No areas approved by the ACOE has been approved by

#### 4. Riparian Buffers: Rigorously

- SLOD 137-44.1B: Define riparian buffers
- ZO 155-34A and B: Establish 100-year floodplain
- ZO 155-34.L: Limit land use

#### 5. Floodplain: Somewhat

- ZO 155-34A and B: Establish 100-year floodplain
- ZO 155-34.L: Limit land use

### RECOMMENDED IMPROVEMENTS

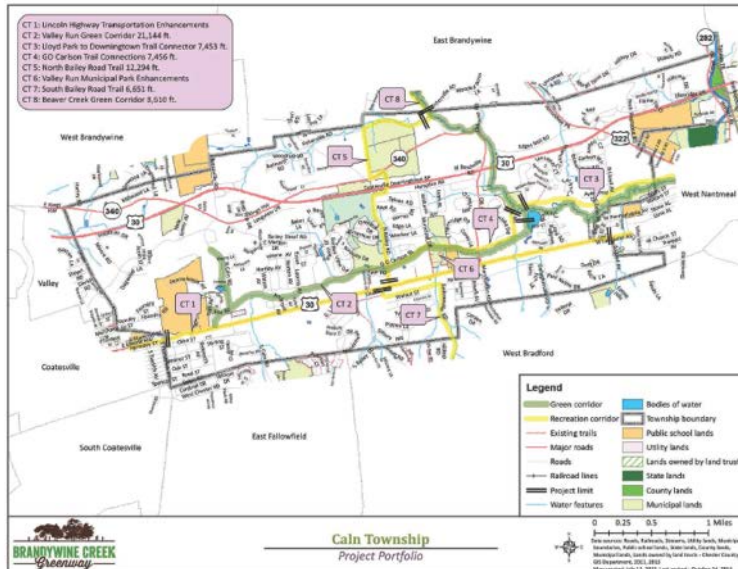
- Steep Slopes: Include maximum disturbance regulations that include prohibited on steep slope grading, and erosion control

## CALN TOWNSHIP

### CT 4

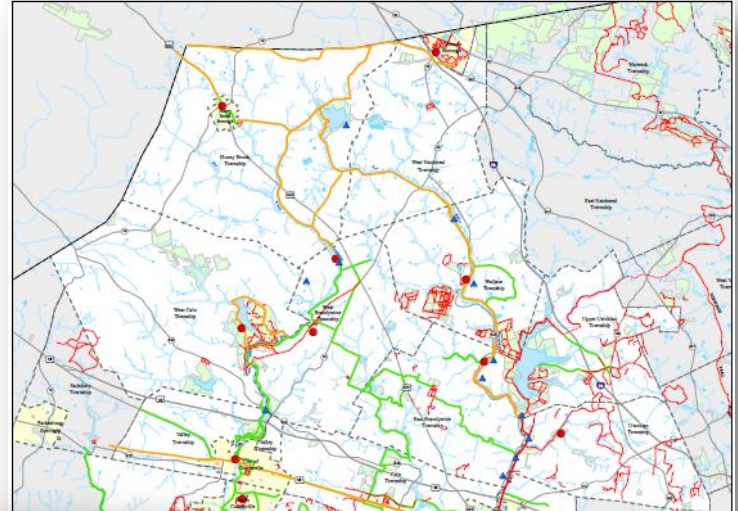
#### Project Name

GO Calton Trail Connections



BRANDYWINE CREEK Greenway

Caln Township Project Portfolio



Project Portfolio BRANDYWINE CREEK GREENWAY STRATEGIC ACTION PLAN

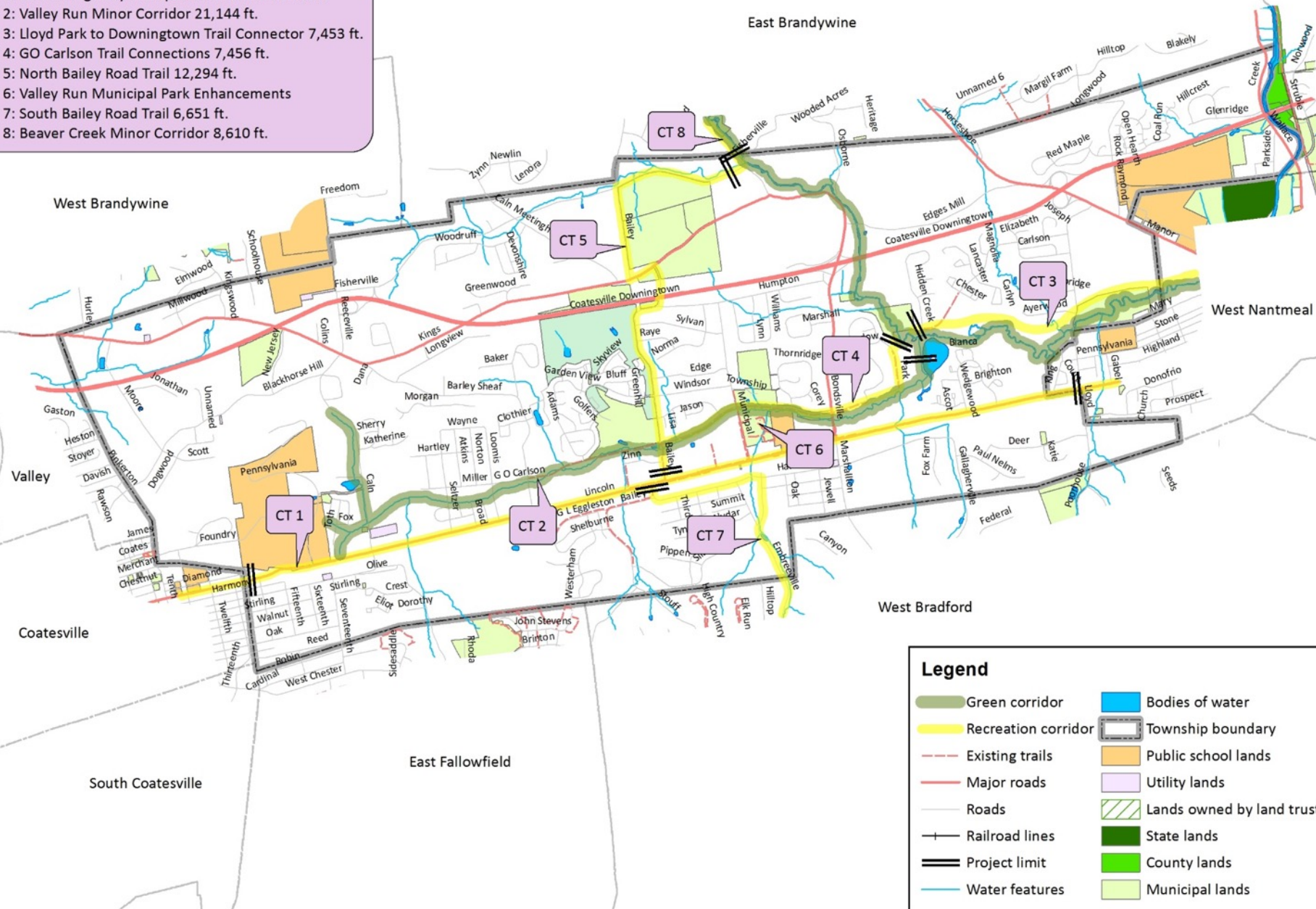
66

### Recreation and Alternative Transportation

Brandywine Creek Greenway



- CT 1: Lincoln Highway Transportation Enhancements
- CT 2: Valley Run Minor Corridor 21,144 ft.
- CT 3: Lloyd Park to Downingtown Trail Connector 7,453 ft.
- CT 4: GO Carlson Trail Connections 7,456 ft.
- CT 5: North Bailey Road Trail 12,294 ft.
- CT 6: Valley Run Municipal Park Enhancements
- CT 7: South Bailey Road Trail 6,651 ft.
- CT 8: Beaver Creek Minor Corridor 8,610 ft.



**Legend**

Green corridor	Bodies of water
Recreation corridor	Township boundary
Existing trails	Public school lands
Major roads	Utility lands
Roads	Lands owned by land trusts
Railroad lines	State lands
Project limit	County lands
Water features	Municipal lands

0 0.25 0.5 1 Miles



Data sources: Roads, Railroads, Streams, Utility lands, Municipal boundaries, Public school lands, State lands, County lands, Municipal lands, Lands owned by land trusts - Chester County GIS Department, 2011, 2013 - Map created: July 15, 2013



**Caln Township**  
Project Portfolio

# Beaver Creek Trail Staff Report, 2015

## CALN TOWNSHIP BEAVER CREEK TRAIL STAFF REPORT



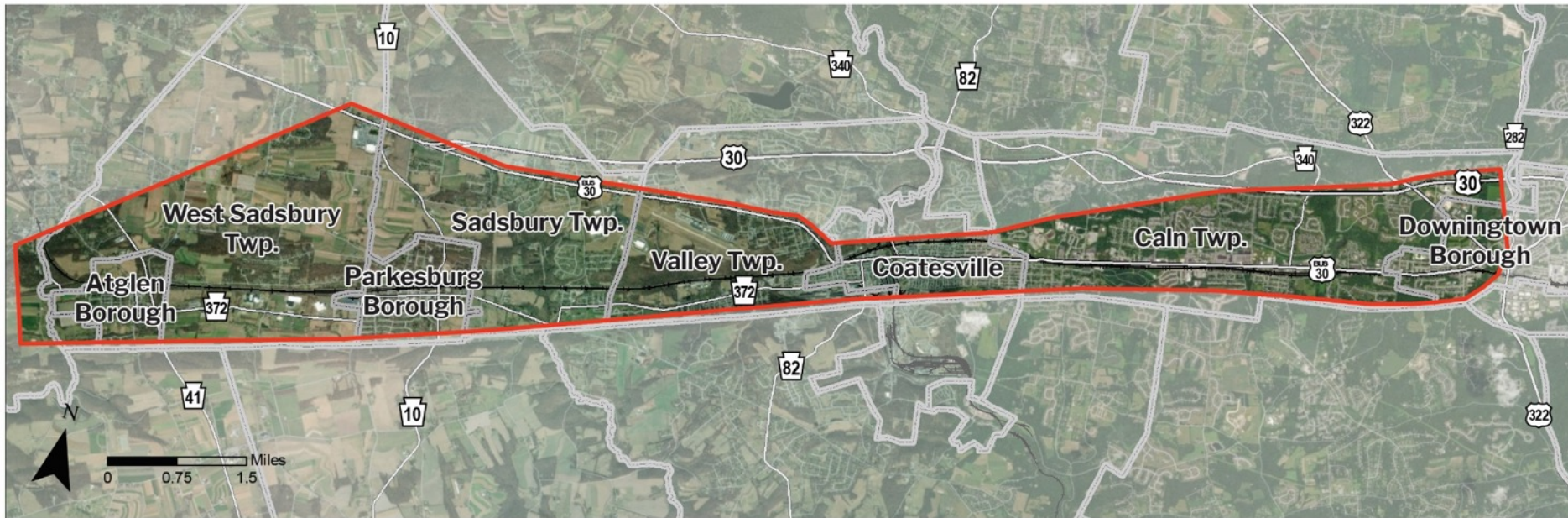
June 2015

- Proposed a 1.5-mile recreation trail along G.O. Carlson at Park Drive, continuing through the woods to Lloyd Avenue Dog Park
- Would connect to 1.8 miles of existing walking trail along G.O. Carlson Boulevard
- Public meeting on June 18, 2015
- Prepared in support of Township applications for grant funding to move forward with the project that were not successful

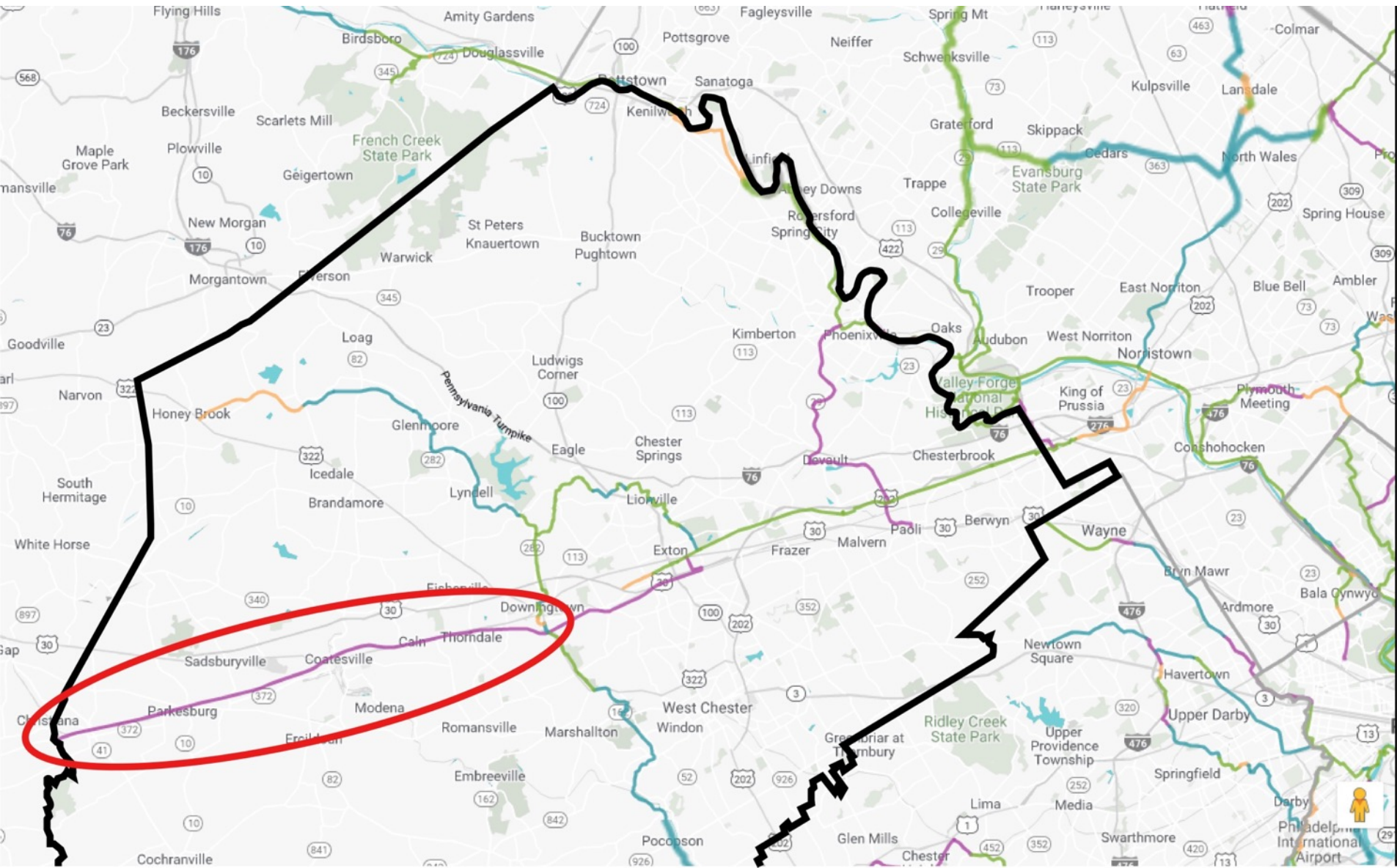


# Chester Valley Trail West

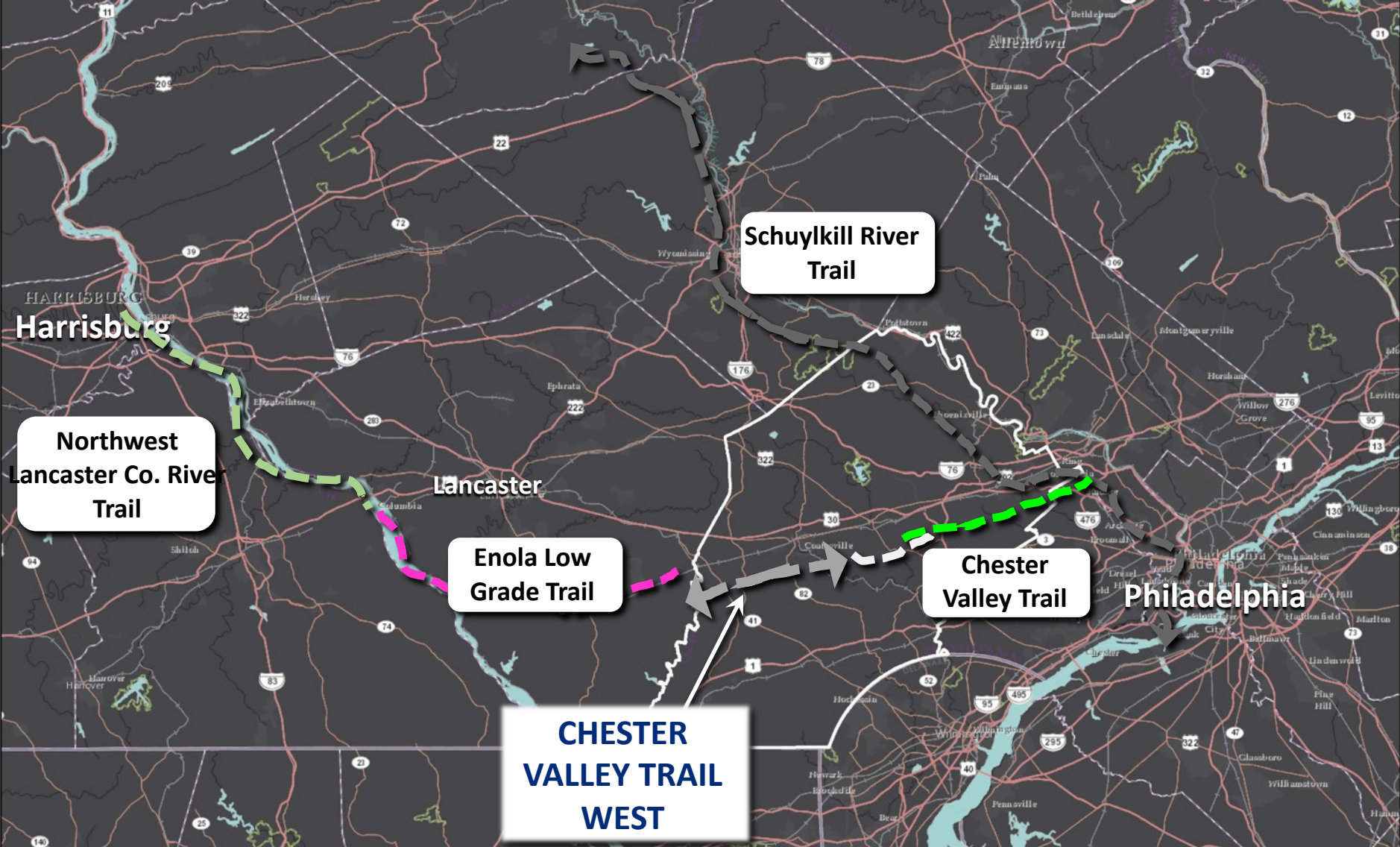
## Feasibility Study and Master Plan



# Project Context



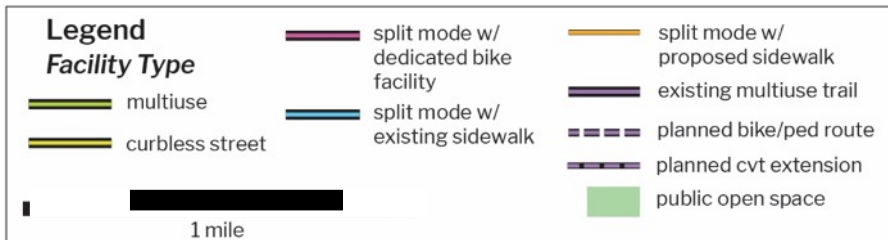
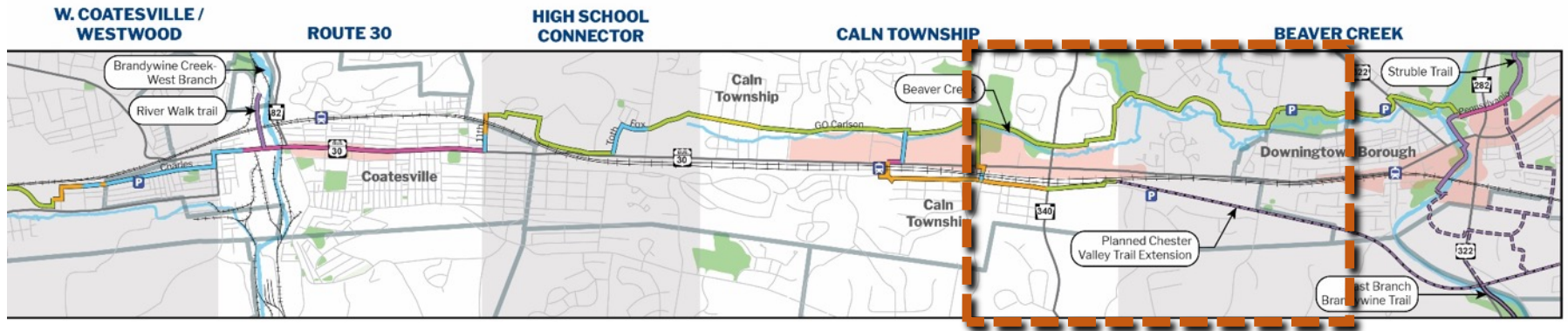
# Project Context



# Recommended Alignment



# Recommended Alignment

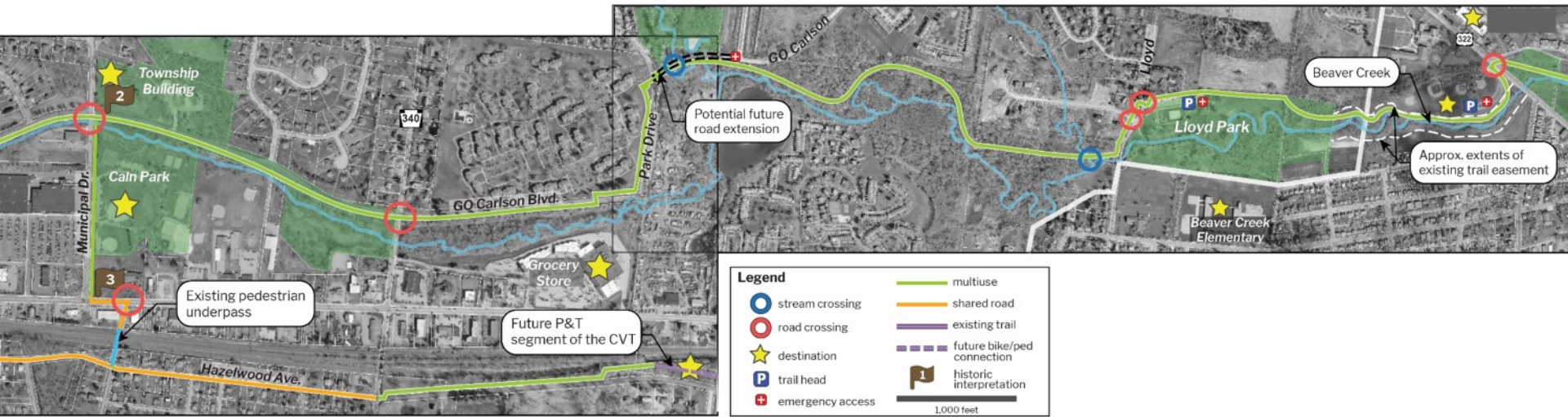


Segment	Total Mileage	Multiuse Miles
Beaver Creek	2.2	1.8
Caln Twp.	5.0	3.3

# CVT West Recommended Alignment

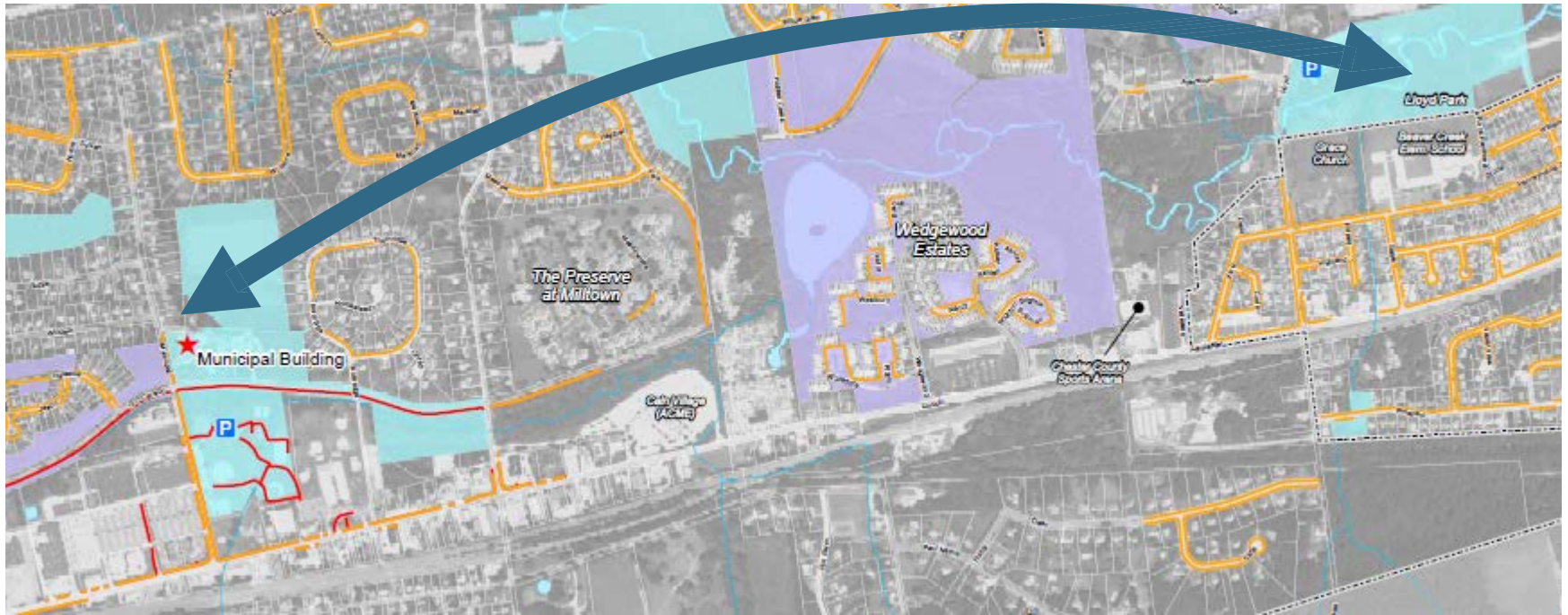
Cain Township Segment

Beaver Creek Segment




Beaver Creek Trail Feasibility Study

# Beaver Creek Trail Feasibility Study Project Overview

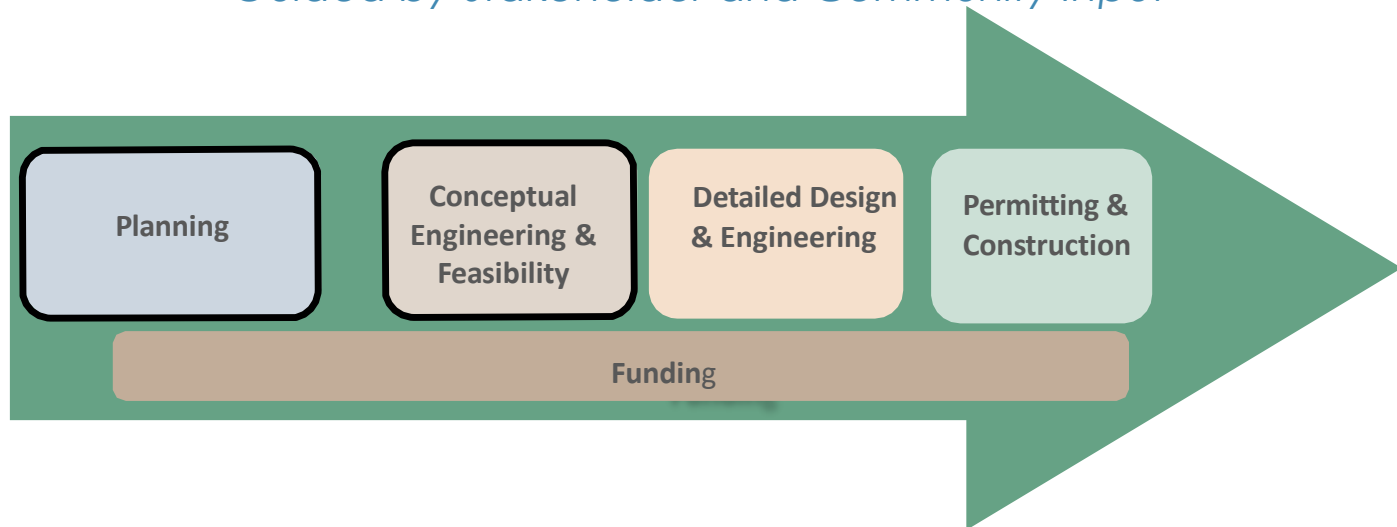


Project goal is to connect the Caln Municipal Building to Lloyd Park for non-vehicular travel

# Scope of Work

- Bicycle & Pedestrian Conceptual Plans
  - Shared Roadway Design Guidelines
  - Alignment Evaluation & Property Owner Engagement
- 
- Implementation Plan & Funding Strategy
  - Draft & Final Report

*Guided by Stakeholder and Community Input*





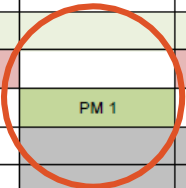
# Project process

- A trail feasibility study helps determine a possible trail alignment by:
  - Considering environmental, cultural, historical, and geologic constraints
  - Building upon previous studies and other local, regional, and state-wide planning efforts
  - Involving the community and other stakeholders to share their input
- A trail feasibility study prepares a project for the design and engineering phase of trail planning which prepares a project for construction
- All together, taking a trail from concept to construction can take ten to twenty years!

# Schedule

Caln Township  
 Beaver Creek Trail Feasibility Study  
 Proposed Timeline  
 last update 3/29/19

Tasks	February	March	April	May	June	July	August	September	October
<b>Project Tasks</b>									
1 Project Management									
2 Existing Conditions Inventory and Data Collection									
3 Bicycle and Pedestrian Facilities Concept Plan									
4 Design Treatments and Guidelines									
5 Alignment Evaluation and Property Owner Engagement									
6 Implementation Plan and Funding Strategy									
<b>Public Participation</b>									
Study Advisory Committee			SAC 1		SAC 2		SAC 3		
Public Meetings				PM 1				PM 2	
Property Owner Coordination and Meetings									
Online Community Engagement									
<b>Deliverables</b>									
Draft Report									
Final Report									

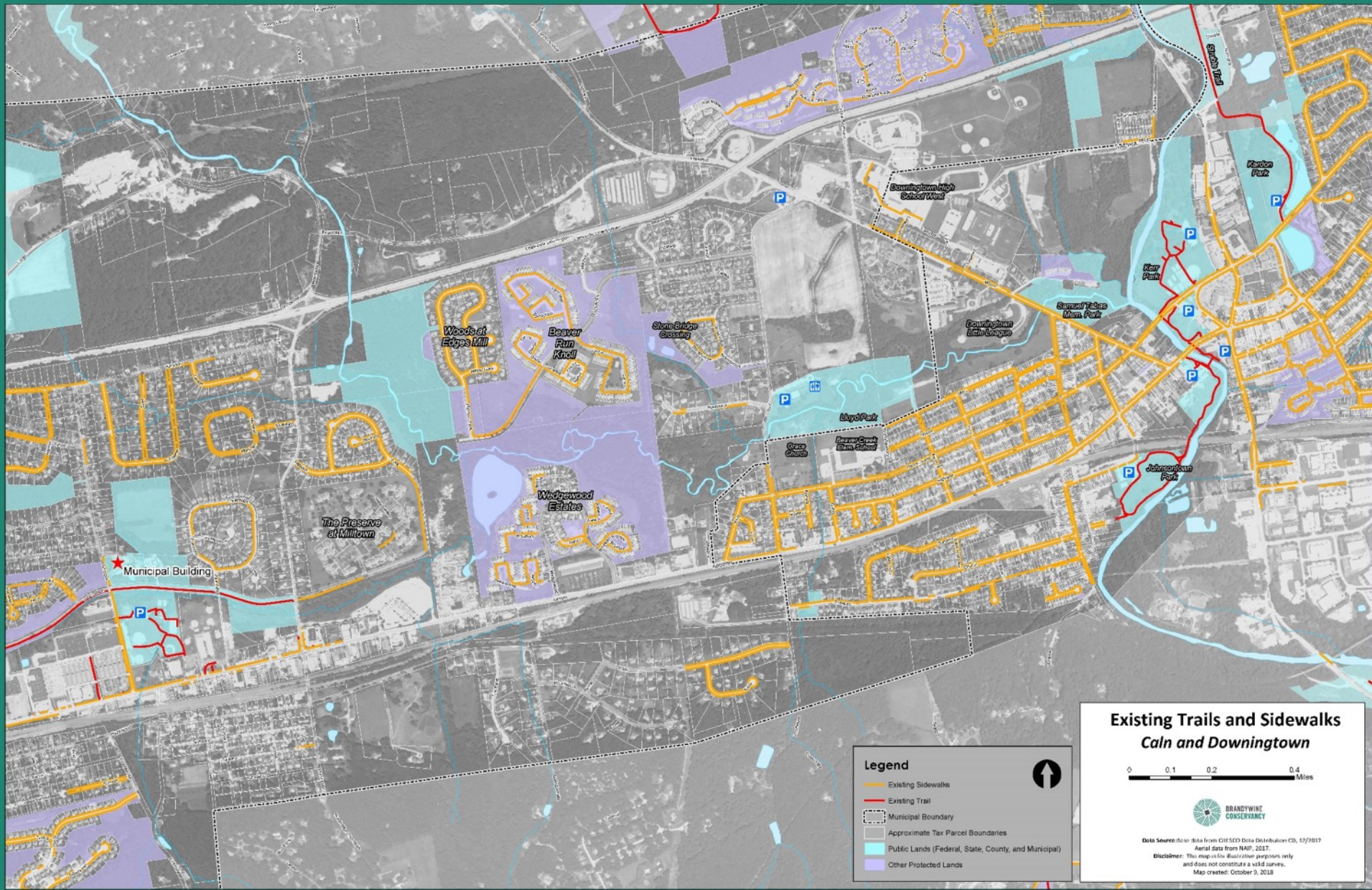


**Meeting Purpose**

1. Give project background
2. Present project overview, scope, timeline, and budget
3. Gather feedback regarding non-vehicular travel in Caln Township



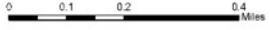
# Inventory Mapping



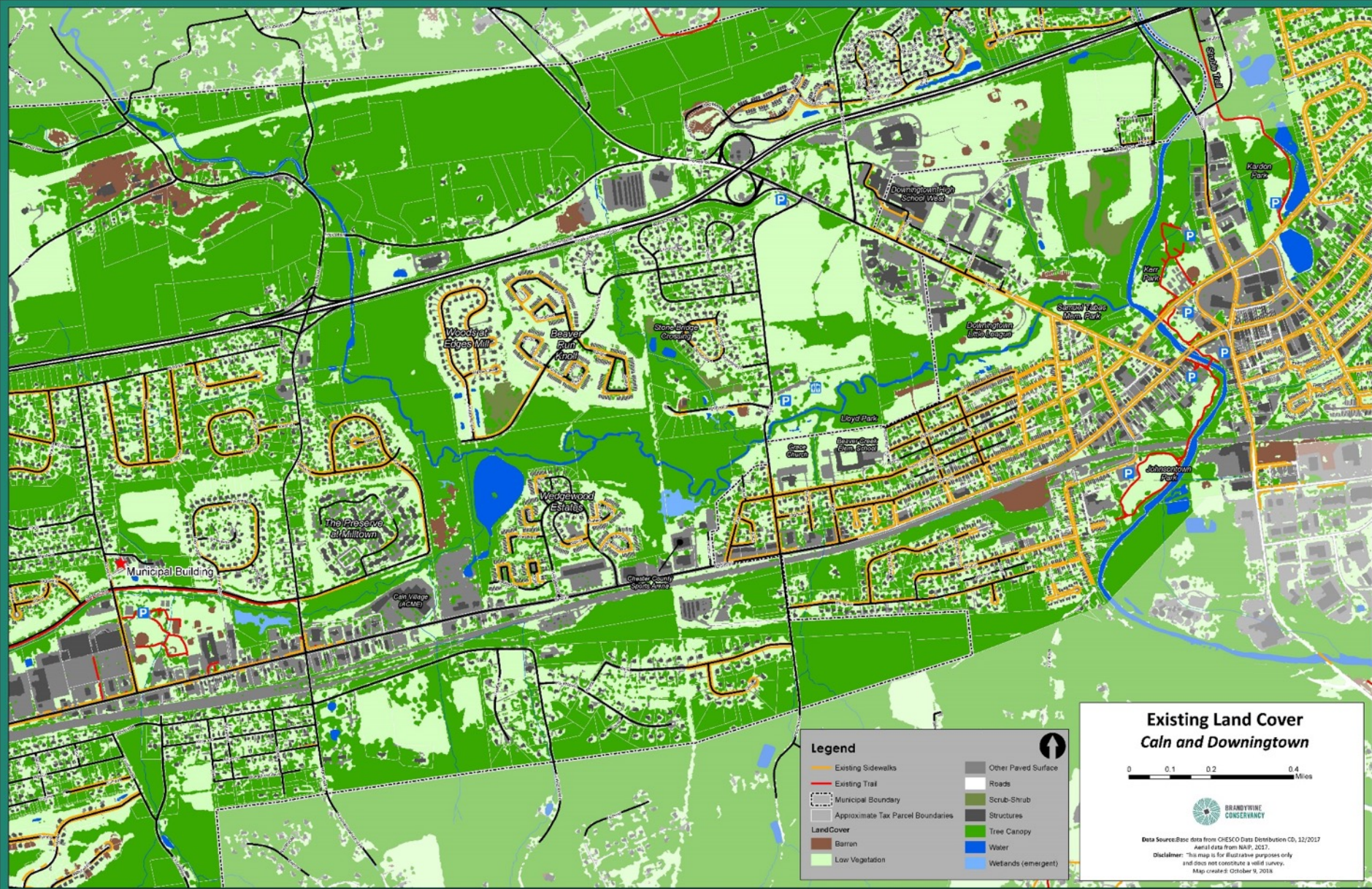
### Existing Trails and Sidewalks Caln and Downingtown

**Legend**

- Existing Sidewalks
- Existing Trail
- Municipal Boundary
- Approximate Tax Parcel Boundaries
- Public Lands (Federal, State, County, and Municipal)
- Other Protected Lands



Data Source: Data from CH2SEEN Data Distribution CD, 12/2017  
Aerial data from NAIP, 2017  
Disclaimer: This map is for illustrative purposes only  
and does not constitute a valid survey.  
Map created: October 9, 2018



**Legend**

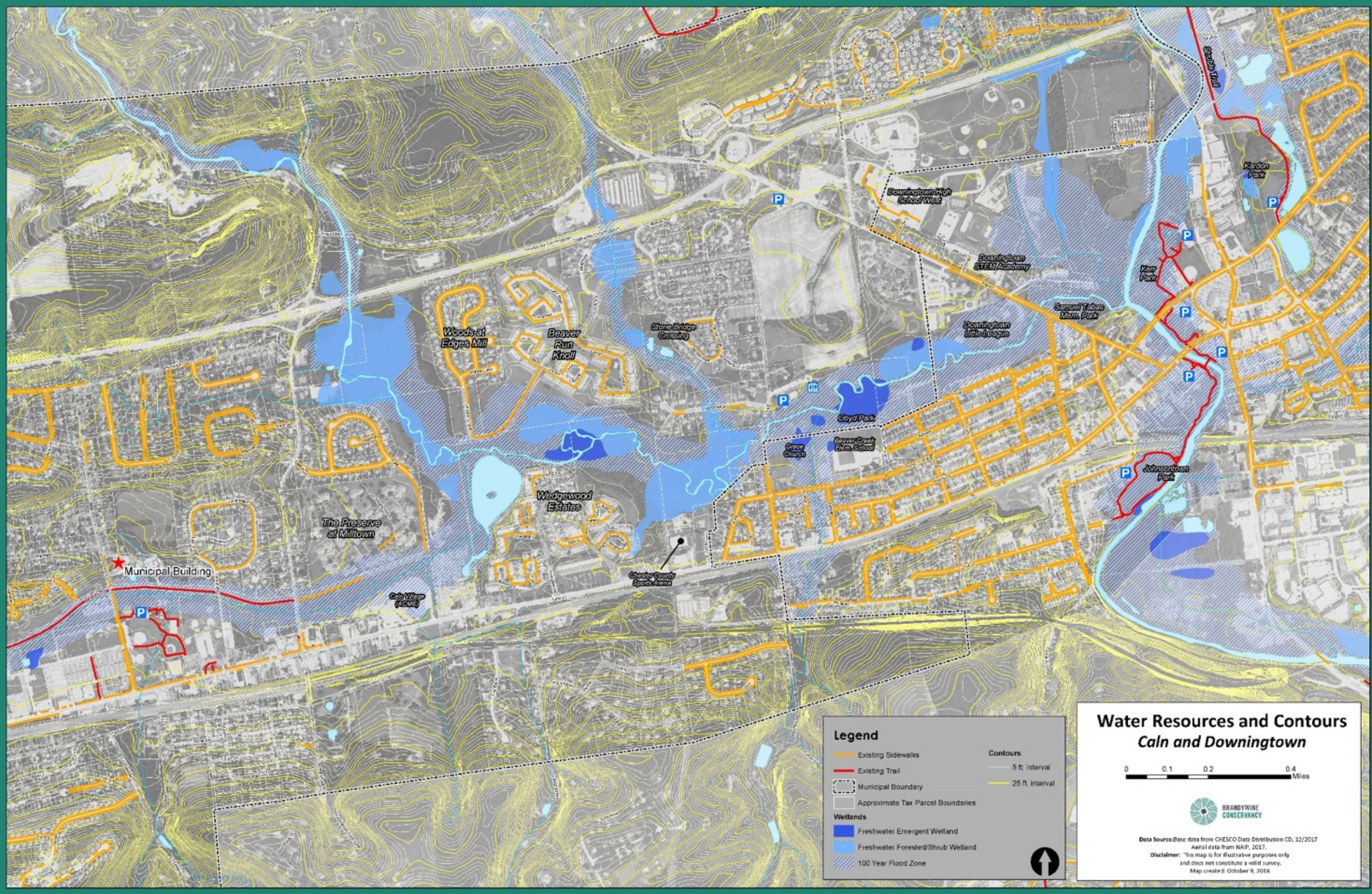
- Existing Sidewalks
- Existing Trail
- Municipal Boundary
- Approximate Tax Parcel Boundaries
- LandCover**
- Barran
- Low Vegetation
- Other Paved Surface
- Roads
- Scrub-Shrub
- Structures
- Tree Canopy
- Water
- Wetlands (emergent)

**Existing Land Cover  
Caln and Downingtown**

0 0.1 0.2 0.4 Miles

**BRANDYWINE  
CONSERVANCY**

Data Source: Base data from CHESCO Data Distribution CD, 12/2017  
Aerial data from NAIP, 2017.  
Disclaimer: This map is for illustrative purposes only  
and does not constitute a valid survey.  
Map create: October 9, 2018.



**Legend**

- Existing Sidewalks
- Existing Trail
- Municipal Boundary
- Approximate Tax Parcel Boundaries
- Wetlands**
- Freshwater Emergent Wetland
- Freshwater Forested/Shrub Wetland
- 100 Year Flood Zone
- Contours**
- 5 ft interval
- 25 ft interval

**Water Resources and Contours  
Caln and Downingtown**

0 0.1 0.2 0.4 Miles

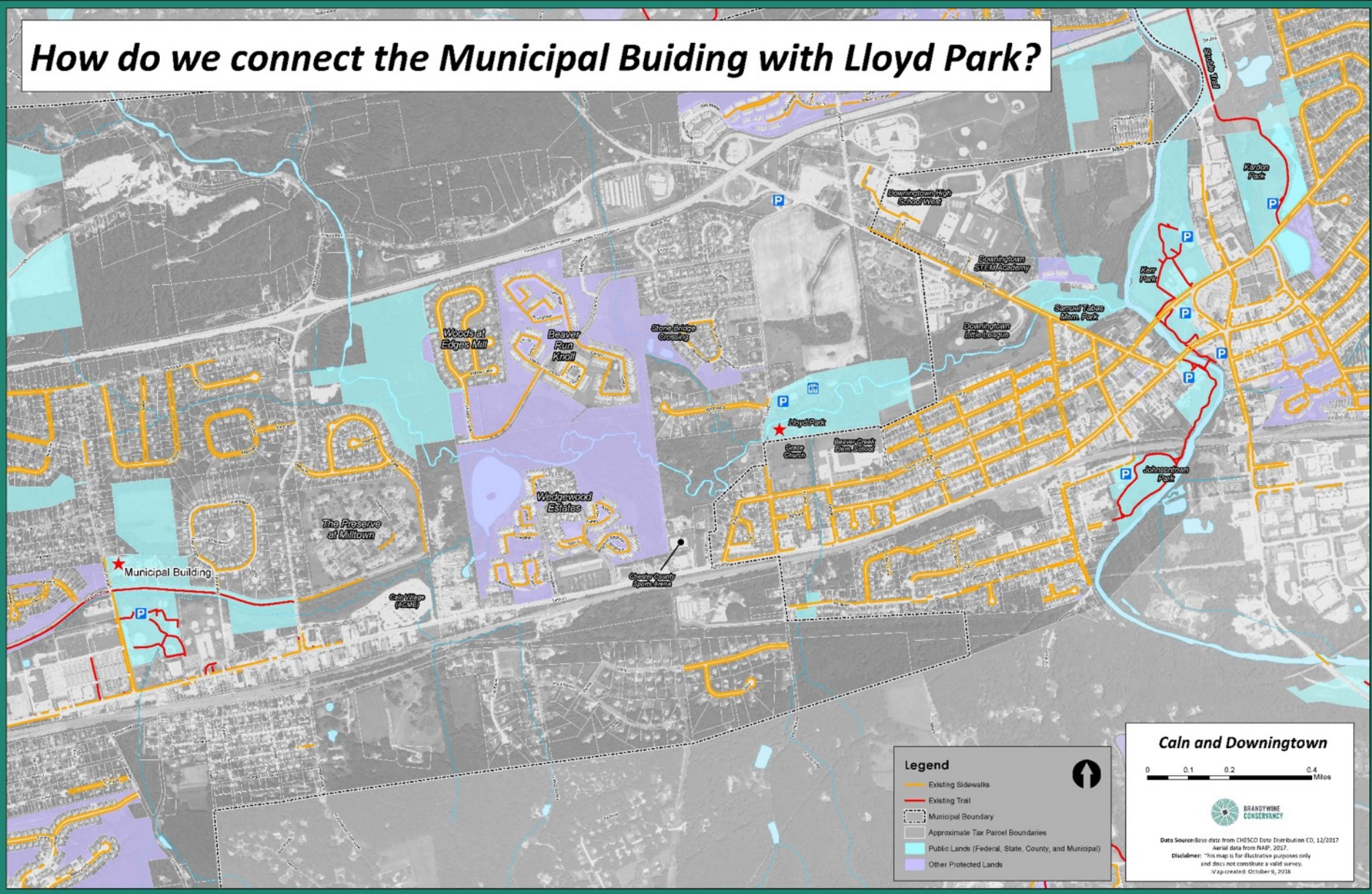
BRANDYWINE CONSERVANCY

Data Source: Base data from CHESCO Data Distribution CD, 12/2017  
Aerial data from NAIP, 2017.  
Disclaimer: This map is for illustrative purposes only  
and does not constitute a valid survey.  
Map created: October 9, 2018



Public input

# How do we connect the Municipal Building with Lloyd Park?



**Legend**

- Existing Sidewalks
- Existing Trail
- Municipal Boundary
- Approximate Tax Parcel Boundaries
- Public Lands (Federal, State, County, and Municipal)
- Other Protected Lands



**Caln and Downingtown**

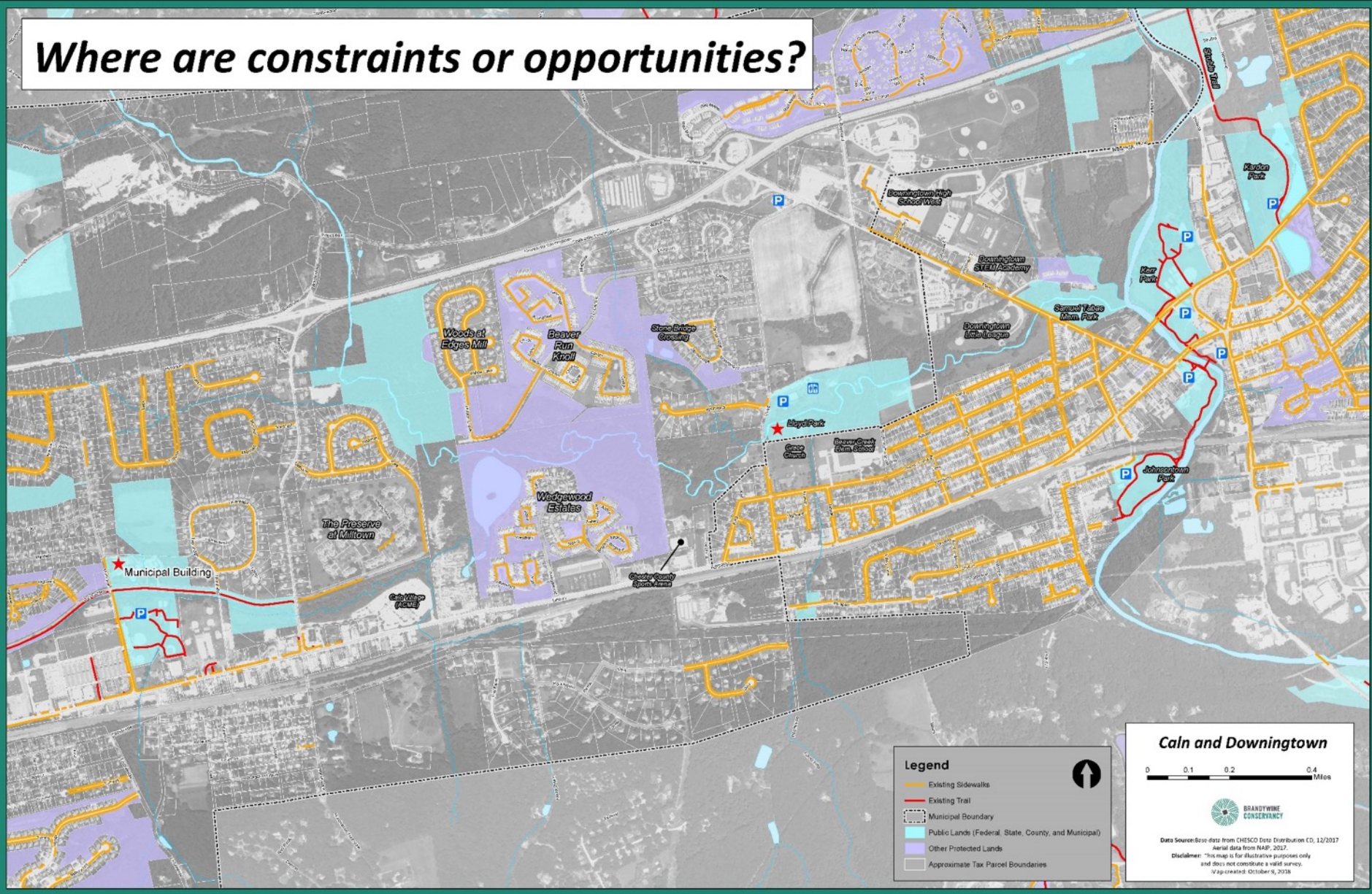
0 0.1 0.2 0.4 Miles

BRANDYWINE CONSERVANCY

Data Source: Base data from CHESCO Data Distribution CO, 12/2017  
Aerial data from NAAP, 2017  
Disclaimer: "This map is for illustrative purposes only and does not constitute a valid survey."  
Map created: October 9, 2018



# Where are constraints or opportunities?



**Legend**

- Existing Sidewalks
- Existing Trail
- Municipal Boundary
- Public Lands (Federal, State, County, and Municipal)
- Other Protected Lands
- Approximate Tax Parcel Boundaries

**Caln and Downingtown**

0 0.1 0.2 0.4 Miles

**BRANDYWINE CONSERVANCY**

Data Source: Base data from CHESCO Data Distribution CO, 12/2017  
Aerial data from NAAP, 2017.  
Disclaimer: "This map is for illustrative purposes only and does not constitute a valid survey."  
Map created: October 9, 2018

# We want to hear from you!

- **Sign-in: Project Email List**
- **Review/Comment on Boards and Participate in Mapping Activity**

- **Project Website**

<https://www.brandywine.org/conservancy/projects/beaver-creek-trail>

- **Comment Forms**
- **Take a project description sheet home with you or share with a neighbor**

## **Beaver Creek Trail Feasibility Study - Comment Form**

Contact Information (optional)

Name \_\_\_\_\_

Address \_\_\_\_\_

E-mail address \_\_\_\_\_

*Please provide written questions, comments, or concerns to the Beaver Creek Trail Feasibility Study. Thank you for your interest and input!*

Please return this form to the sign-in table.

Check out the project website for more information and future updates!  
<https://www.brandywine.org/conservancy/projects/beaver-creek-trail>

## Next Steps

Receive and review community input

Property owner coordination

Work with study advisory committee to develop draft trail alignment

Community Workshop for public input on draft alignment

*(date to be determined and publicized, fall 2019)*

*Thank you!*