



## BRANDYWINE RIVER MUSEUM OF ART

# GUIDED MUSEUM TOUR PACKAGES



### N. C. WYETH PACKAGE

**Offered:** Daily, early April–late November  
**Length:** Minimum of 2 hours  
**Price:** \$26 per person  
**Capacity:** 10–56 people

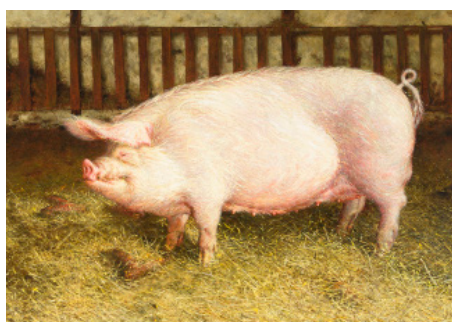
For the N. C. Wyeth fan! With this package you will have a private Three Generations Museum Tour with focus on N. C. Wyeth and a tour of N. C. Wyeth's house and studio.



### ANDREW WYETH PACKAGE

**Offered:** Daily, early April–late November  
**Length:** Minimum of 2 hours  
**Price:** \$26 per person  
**Capacity:** 10–56 people

For the Andrew fanatic! With this package you will have a private Three Generations Museum Tour with a focus on Andrew Wyeth and a tour of Andrew Wyeth's studio.



### THREE GENERATIONS/ONE MUSEUM PACKAGE

**Offered:** Daily, early April–late November  
**Length:** Minimum of 3 hours  
**Price:** \$36 per person  
**Capacity:** 10–56 people

A day of Wyeths! This is the ultimate package for fans of the Wyeth family of artists. With this package you will have a private Three Generations Museum Tour, and a tour of the Andrew Wyeth Studio and N. C. Wyeth House & Studio.

### BRANDYWINE TREASURES PACKAGE

**Offered:** Daily, early April–late November  
**Length:** Minimum of 2 hours/maximum of 3 hours  
**Price:** \$26 per person or \$36 per person  
**Capacity:** 10–56 people

A great introduction to the artists of the Brandywine Valley! With this package you will have a private Brandywine Treasures Museum Tour and one or both property tours.

### CONTACT US

Liv Rothfuss Elicker • [grouptours@brandywine.org](mailto:grouptours@brandywine.org) • 610.388.8333

[www.brandywine.org/groups](http://www.brandywine.org/groups)

Images (from top):

N. C. Wyeth, *Island Funeral* (detail), 1939. Andrew Wyeth, *Siri*, 1970. Jamie Wyeth, *Portrait of Pig*, 1970