



GUIDED MUSEUM TOUR OPTIONS

BRANDYWINE RIVER MUSEUM OF ART

GUIDED MUSEUM TOURS

OFFERED:

Wednesday–Sunday
9:30 a.m. and 3:15 p.m.*

LENGTH:

Approximately 1 Hour

PRICE:

\$16 per person

CAPACITY:

Minimum of 10

**Some tours offered seasonally
or during exhibition dates.*

CONTACT US

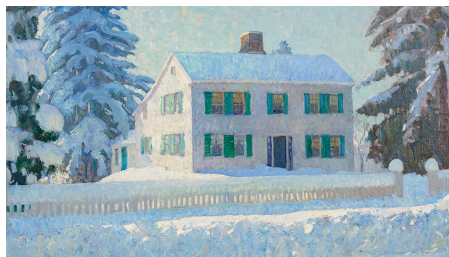
Liv Rothfuss Elicker
grouptours@brandywine.org
610-388-8333

www.brandywine.org/groups



BRANDYWINE TREASURES TOUR

New to the museum, or looking to see it all? The Brandywine Treasures Tour showcases the highlights of our collection devoted to American Art with a particular emphasis in art of the Brandywine region—landscape, still life, trompe l'oeil, illustration and work created by three generations of the Wyeth family.



BRANDYWINE CHRISTMAS TOUR

**Offered Nov 27, 2020–Jan 10, 2021
(excluding Dec 24–Jan 1)**

Come explore the enchanted world that is the Brandywine River Museum of Art during the holiday season. In addition to getting a Brandywine Treasures Tour, groups will learn more about the creation of thousands of whimsical Critters displayed on towering trees soaring up through the Museum's three-story atrium before ending their tour at our O-gauge model train display – a visitor favorite!



THREE GENERATIONS OF WYETHS TOUR

Internationally recognized for our collection of works by the Wyeth family, the Three Generations of Wyeths Tour explores the dynamic history and artistic legacy of N. C. Wyeth, Andrew Wyeth, and Jamie Wyeth, in addition to other members of their renowned family.

UPCOMING SPECIAL EXHIBITION TOURS

***Votes for Women: A Visual
History***

Offered Feb 1–June 7, 2020

***Fragile Earth: The Naturalist
Impulse in Contemporary Art***

Offered Jun 25–Sep 27, 2020

***America's Impressionism:
Echoes of a Revolution***

Offered Oct 17, 2020–
Jan 10, 2021

*For more information, visit
[www.brandywine.org/museum/
exhibitions](http://www.brandywine.org/museum/exhibitions)*

*Images (Clockwise from top left):
William Trost Richards, *The Valley of the Brandywine,
Chester County (September)* (detail), 1886–1887.
N. C. Wyeth, *Treasure Island, endpaper illustration
(detail)*, 1911. N. C. Wyeth, *Zirngiebel House,
Needham—Heavy Snow* (detail), ca. 1922.*



GUIDED HISTORIC PROPERTY TOUR OPTIONS

BRANDYWINE RIVER MUSEUM OF ART

GUIDED HISTORIC PROPERTY TOURS

OFFERED:

Wednesday through Sunday, early April through late November*

LENGTH:

Approximately 1 Hour

PRICE:

\$24 per person for one property, \$34 per person for both properties

CAPACITY:

Minimum of 10, maximum of 56**

**Schedule of which tours run at each time varies. Please reach out for specific offerings.*

***Each tour time slot can accommodate up to 14 visitors. Larger groups can reserve additional time slots.*

CONTACT US

Liv Rothfuss Elicker
 grouptours@brandywine.org
 610-388-8333
www.brandywine.org/groups



N. C. WYETH HOUSE & STUDIO TOUR

In 1911, with the proceeds from his illustrations for Treasure Island, N. C. Wyeth purchased 18 acres of land in the village of Chadds Ford where he built his house and studio. Here he set down roots, which have nourished a family of extraordinary creativity for more than a century. Through this tour, groups will get to know the Wyeth family more intimately, discovering how it all began.



ANDREW WYETH STUDIO TOUR

Andrew Wyeth painted many of his most important works of art in his Chadds Ford studio between 1940 and 2008, inspired by the people, architecture and landscapes of Chadds Ford. Extremely private during his lifetime, this tour gives groups a truly unique opportunity to see where he once lived and worked.

HISTORIC PROPERTY TOUR SCHEDULE

April 1–November 22, 2020

| | Monday | Tuesday | Wednesday | Thursday | Friday | Saturday | Sunday |
|--|--------|---------|-----------|----------|--------|----------|--------|
| | ----- | ----- | 10:00 | 10:00 | 10:00 | 10:00 | 10:00 |
| | ----- | ----- | 11:15 | 11:15 | 11:15 | 11:15 | 11:15 |
| Andrew Wyeth Studio Tour | ----- | ----- | 12:45 | 12:45 | 12:45 | 12:45 | 12:45 |
| | 2:00 | ----- | 2:00 | 2:00 | 2:00 | ----- | 2:00 |
| | 3:15 | ----- | 3:15 | 3:15 | 3:15 | ----- | 3:15 |
| | 10:00 | ----- | 10:00 | 10:00 | 10:00 | 10:00 | 10:00 |
| | 11:15 | ----- | 11:15 | 11:15 | 11:15 | 11:15 | 11:15 |
| N. C. Wyeth House & Studio Tour | 12:45 | ----- | 12:45 | 12:45 | 12:45 | 12:45 | 12:45 |
| | ----- | ----- | 2:00 | 2:00 | 2:00 | 2:00 | 2:00 |
| | ----- | ----- | 3:15 | 3:15 | 3:15 | 3:15 | 3:15 |



GUIDED MUSEUM TOUR PACKAGES

BRANDYWINE RIVER MUSEUM OF ART



N. C. WYETH PACKAGE

Offered: Daily, early April–late November
Length: Minimum of 2 hours
Price: \$26 per person
Capacity: 10–56 people

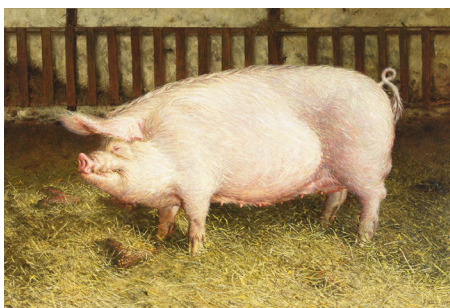
For the N. C. Wyeth fan! With this package you will have a private Three Generations Museum Tour with focus on N. C. Wyeth and a tour of N. C. Wyeth's house and studio.



ANDREW WYETH PACKAGE

Offered: Daily, early April–late November
Length: Minimum of 2 hours
Price: \$26 per person
Capacity: 10–56 people

For the Andrew fanatic! With this package you will have a private Three Generations Museum Tour with a focus on Andrew Wyeth and a tour of Andrew Wyeth's studio.



THREE GENERATIONS/ONE MUSEUM PACKAGE

Offered: Daily, early April–late November
Length: Minimum of 3 hours
Price: \$36 per person
Capacity: 10–56 people

A day of Wyeths! This is the ultimate package for fans of the Wyeth family of artists. With this package you will have a private Three Generations Museum Tour, and a tour of the Andrew Wyeth Studio and N. C. Wyeth House & Studio.

BRANDYWINE TREASURES PACKAGE

Offered: Daily, early April–late November
Length: Minimum of 2 hours/maximum of 3 hours
Price: \$26 per person or \$36 per person
Capacity: 10–56 people

A great introduction to the artists of the Brandywine Valley! With this package you will have a private Brandywine Treasures Museum Tour and one or both property tours.

CONTACT US

Liv Rothfuss Elicker • grouptours@brandywine.org • 610.388.8333

www.brandywine.org/groups

Images (from top):

N. C. Wyeth, *Island Funeral* (detail), 1939. Andrew Wyeth, *Siri*, 1970. Jamie Wyeth, *Portrait of Pig*, 1970