



# Welcome! Agenda for Tonight:

- Introduce the project and the study advisory committee
- Project inventory
- Discuss trail alignment
- Discuss options for improvements to the former Icedale Lake area, “Icedale Meadows”
- Other comments and next steps



# Housekeeping items

- Please mute yourself unless you are speaking
- If you have a question, you can use the Zoom function to raise your hand or wait for an opportunity for public comment during the presentation
- To be added to the e-list for this project, please send a chat with your e-mail address in it to the host
- Website for this project:  
<https://www.brandywine.org/conservancy/projects/icedale-trail-feasibility-study>





# Study Advisory Committee Members

## West Brandywine Township Reps

- John Cassels
- Jack Conti
- Meghan Jackson
- Aus Marburger
- Karen Sload

## Chester County Planning Commission Grant Monitor

- Mark Gallant

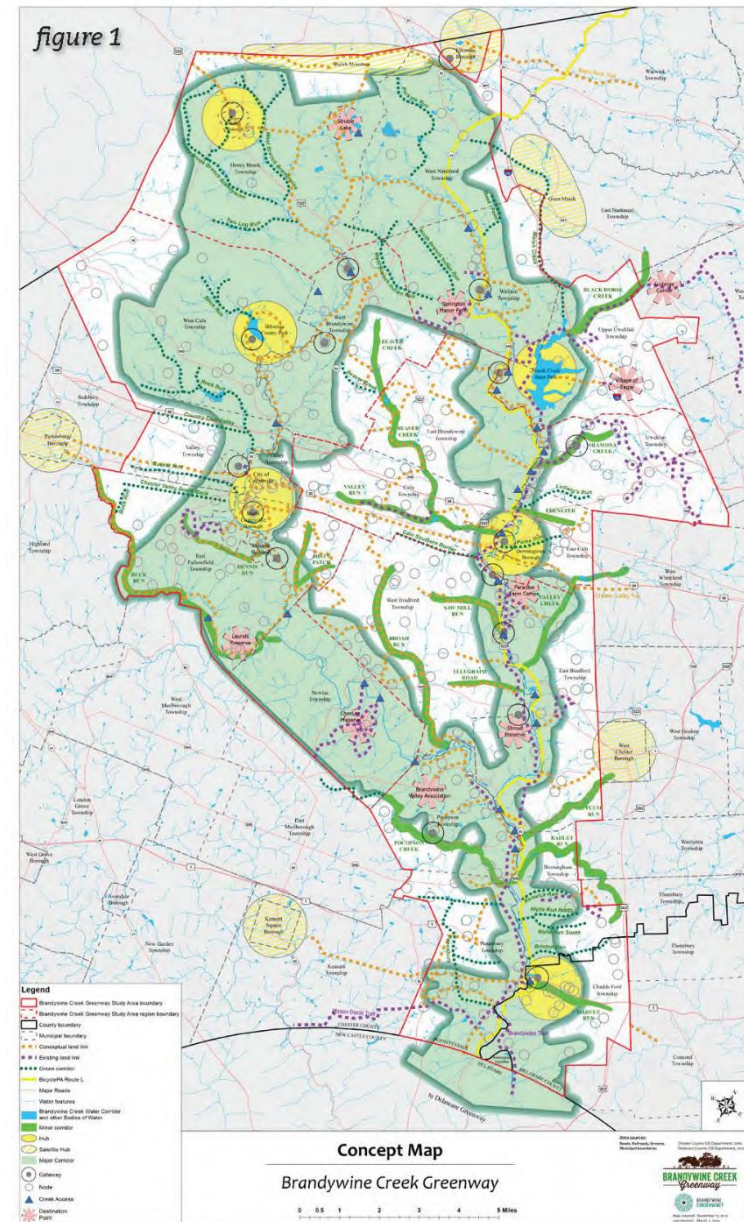
## Honey Brook Township Reps

- Susan Lacy
- Steve Landes
- Melissa Needles
- Ray Shafer
- Travis Stacey
- Kevin Wynant
- Sheri Zynn



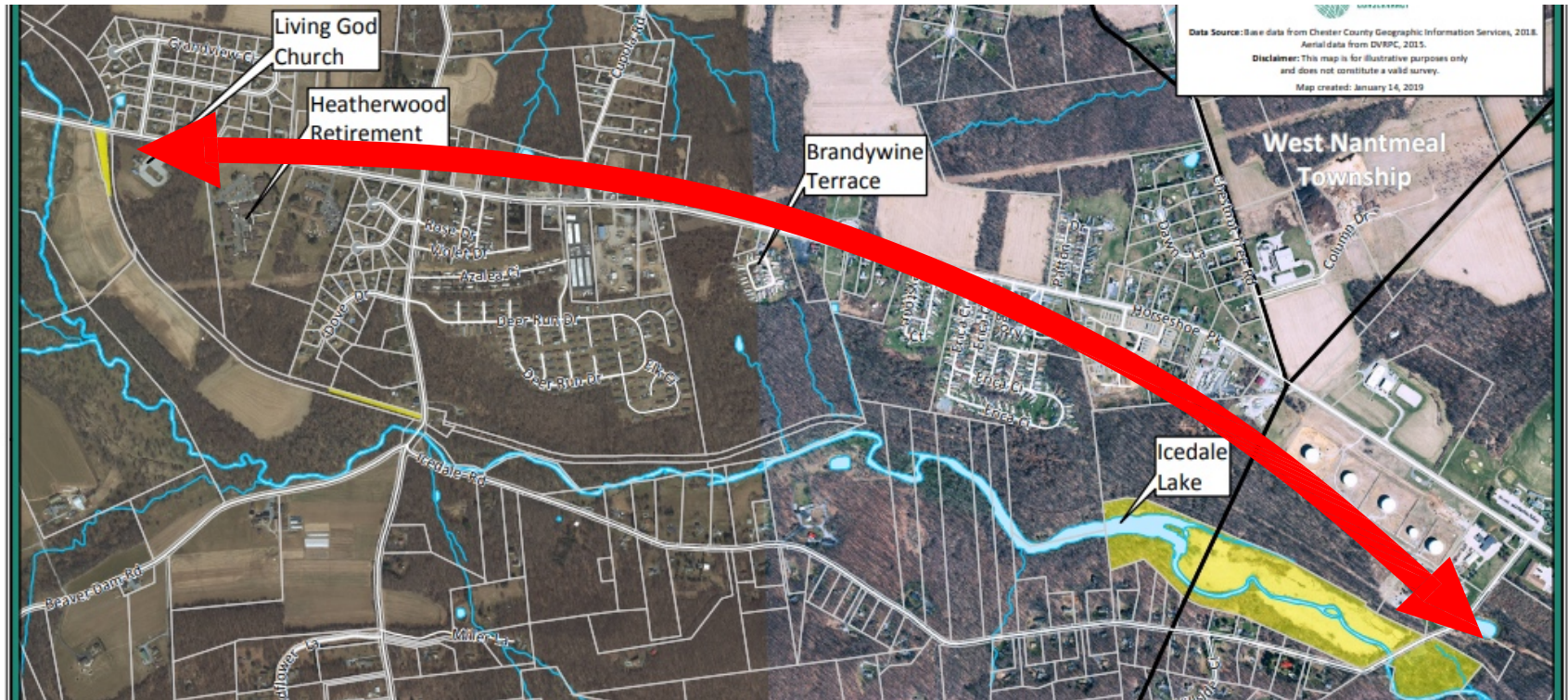
# Municipal Planning Background

- 2009 ● Honey Brook Township Official Map
- 2015 ● Northern Struble Trail Feasibility Study
- 2015 ● Brandywine Creek Greenway Strategic Action Plan
- 2015 ● Honey Brook Township and Borough Multi-Municipal Comprehensive Plan
- 2018 ● East-West Bicycle and Pedestrian Facilities Plan
- 2019 ● West Brandywine Township Comprehensive Plan Update
- 2021 ● Icedale Trail Feasibility Study





# Icedale Trail Feasibility Study



Project goal is to connect trails at Living God Church to Icedale Lake for non-vehicular travel



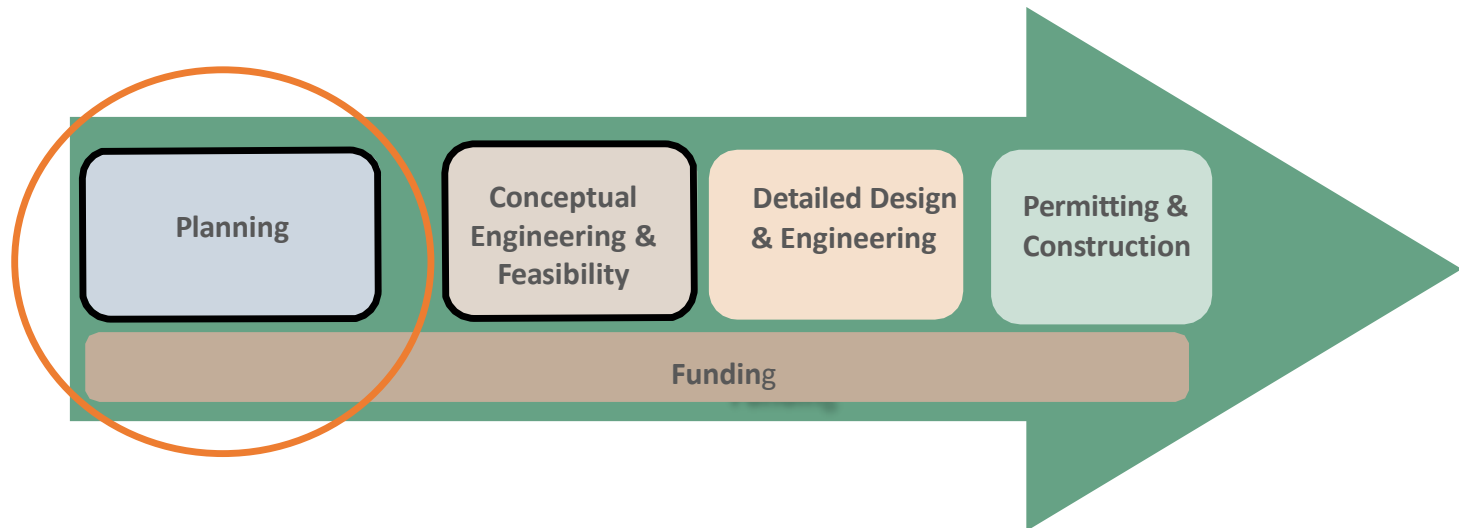
# Scope of Work

- Existing conditions and inventory, Alignment Evaluation & Property Owner Engagement
- Icedale Meadows Concept Plan
- Icedale Trail Concept Plan



- Implementation Plan & Funding Strategy
- Draft Report
- Final Report

*Guided by Stakeholder and Community Input*





# Project process

- A trail feasibility study helps determine a possible trail alignment by:
  - Considering environmental, cultural, historical, and geologic constraints
  - Building upon previous studies and other local, regional, and state-wide planning efforts
  - Involving the community and other stakeholders to share their input
- A trail feasibility study prepares a project for the design and engineering phase of trail planning which prepares a project for construction
- All together, taking a trail from concept to construction can take ten to twenty years!

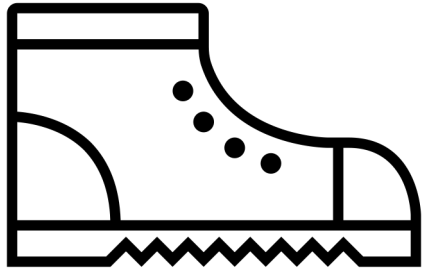


# Project Schedule and Overview

## Icedale Trail Feasibility Study - Honey Brook Township Project Tasks and Timeline

Tasks	Month 1	Month 2	Month 3	Month 4	Month 5	Month 6	Month 7	Month 8	Month 9	Month 10	Month 11	Month 12
<b>Project Tasks</b>												
1 Project Management/Administration												
2 Existing Conditions Inventory and Data Collection												
3 Alignment Evaluation and Property Owner Engagement												
4 Icedale Trail Concept Plan												
5 Icedale Park Concept Plan												
6 Implementation Plan and Funding Strategy												
7 Public Participation												
8 Draft and Final Reports												
<b>Public Participation</b>												
Study Advisory Committee Meetings	SAC 1		SAC 2				SAC 3			SAC 4		
Public Meetings				PM 1				PM 2			PM 3	
Property Owner Coordination Meetings												
PA Fish and Boat Coordination Meetings												
Project Updates and Communication												
Online Community Engagement												
<b>Deliverables</b>												
Draft Report												
Final Report												





# Project Inventory

Mapping and Field Inventory





Looking southwest at Icedale Lake, 1970 photograph taken from helicopter. Part of Hagley Museum and Library Collection. Photographer Lloyd Teitsworth.



# Icedale Trail Feasibility Study Area Aerial

0 475 950 1,900  
Feet



Data Source: Base data from Chester County Geographic Information Services, 2018.  
Aerial data from DVRPC, 2015.

Disclaimer: This map is for illustrative purposes only  
and does not constitute a valid survey.

Map created: January 14, 2019

## Legend

- Tax parcels
- State/county property
- Municipal boundaries
- Water resources
- Bodies of water

Sources: Esri, DigitalGlobe, GeoEye, Earthstar Geographics, CNES/Airbus DS, USDA/USGS, AeroGRID, IGN, and the GIS User Community



# Icedale Trail Feasibility Study Area

## Regional Context

West Brandywine and Honey Brook Township

-Draft-

0 345 690 1,380 2,070 2,760 Feet



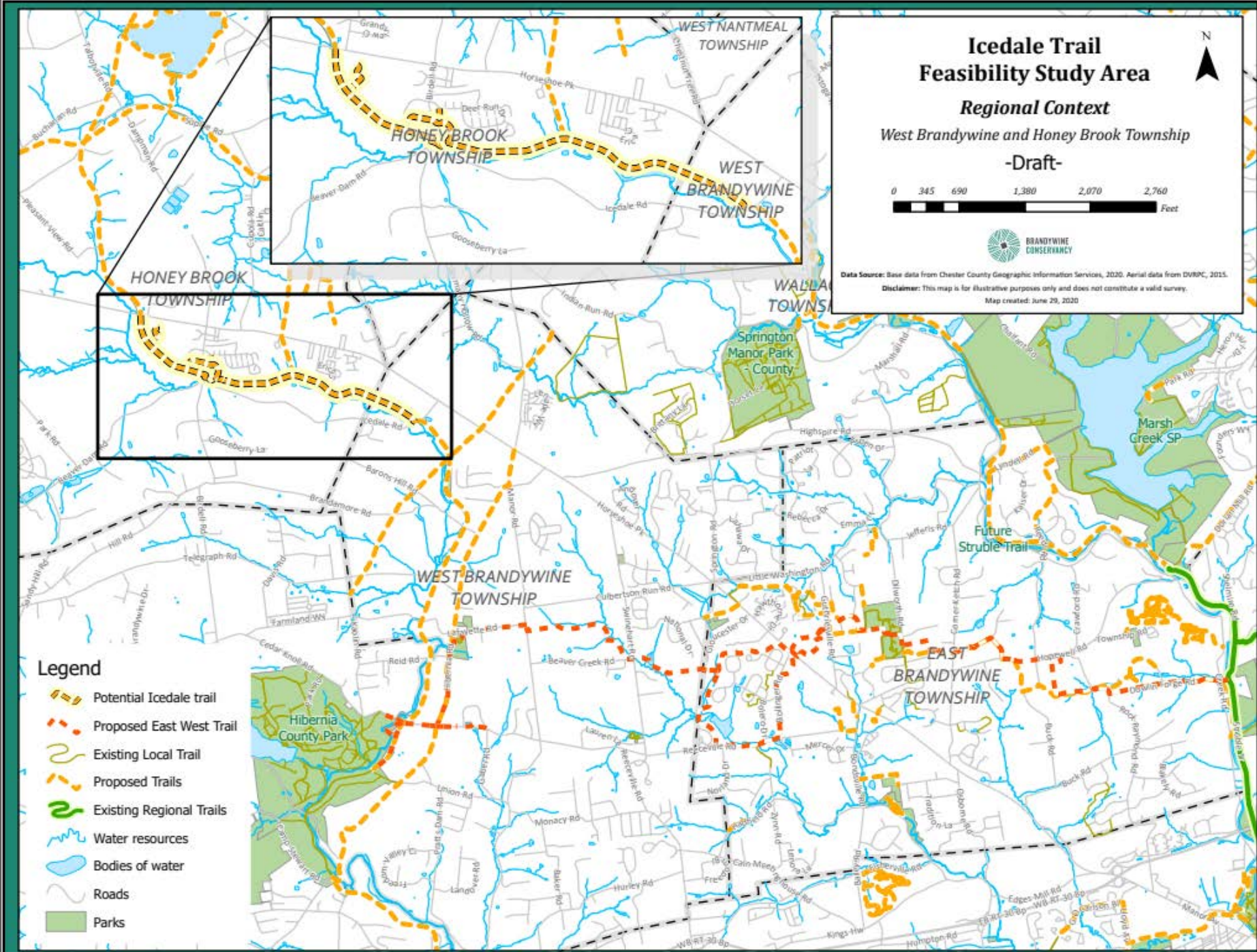
Data Source: Base data from Chester County Geographic Information Services, 2020. Aerial data from DVMPC, 2015.

Disclaimer: This map is for illustrative purposes only and does not constitute a valid survey.

Map created: June 29, 2020

## Legend

- Potential Icedale trail
- Proposed East West Trail
- Existing Local Trail
- Proposed Trails
- Existing Regional Trails
- Water resources
- Bodies of water
- Roads
- Parks





# Icedale Trail Feasibility Study Area

## Land Use

West Brandywine and Honey Brook Township

-Draft-

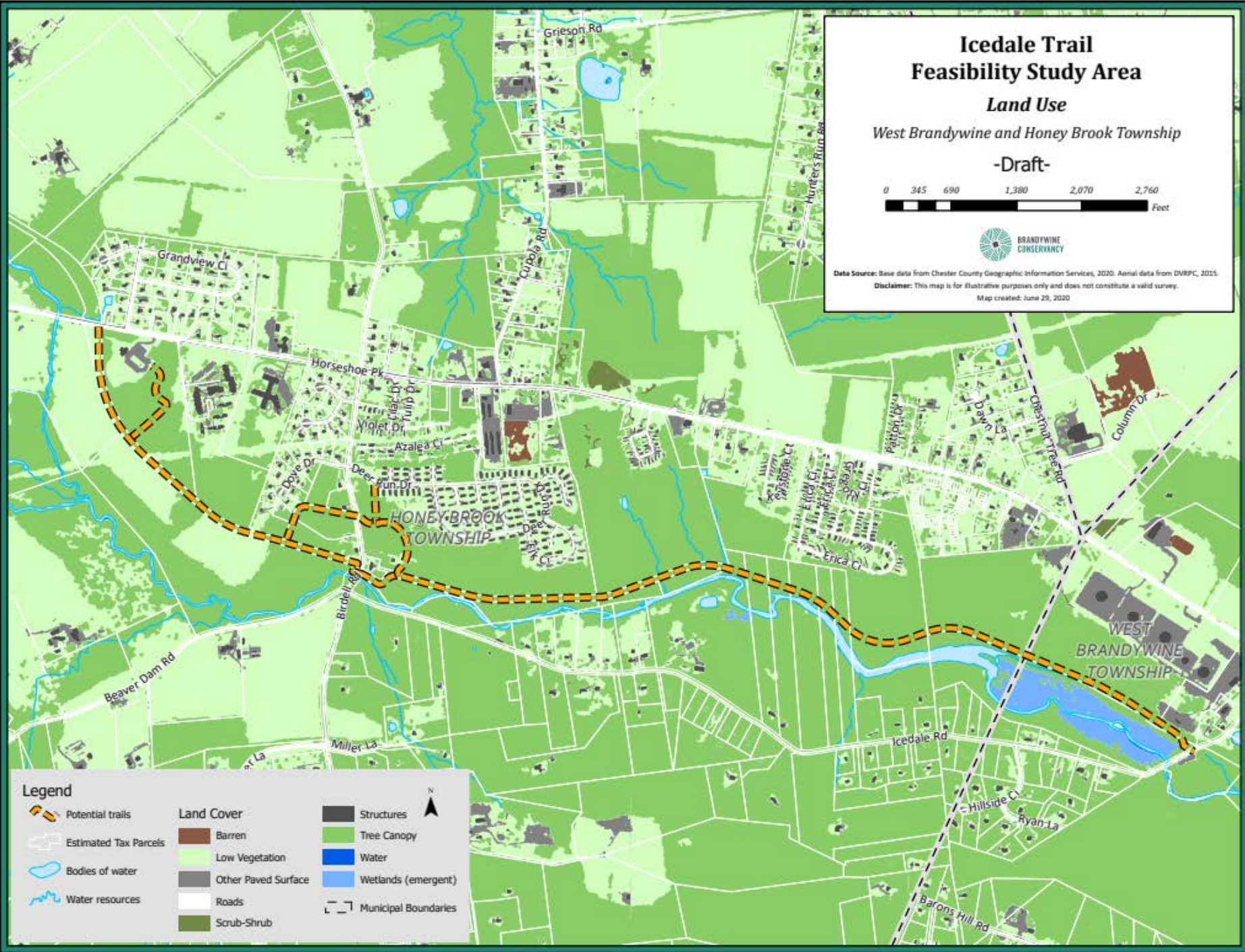
0 345 690 1,380 2,070 2,760 Feet



Data Source: Base data from Chester County Geographic Information Services, 2020. Aerial data from DVBP, 2015.

Disclaimer: This map is for illustrative purposes only and does not constitute a valid survey.

Map created: June 29, 2020



### Legend

- |                       |                     |                      |
|-----------------------|---------------------|----------------------|
| Potential trails      | <b>Land Cover</b>   | Structures           |
| Estimated Tax Parcels | Barren              | Tree Canopy          |
| Bodies of water       | Low Vegetation      | Water                |
| Water resources       | Other Paved Surface | Wetlands (emergent)  |
|                       | Roads               | Municipal Boundaries |
|                       | Scrub-Shrub         |                      |



# Icedale Trail Feasibility Study Area

## Water Resources

West Brandywine and Honey Brook Township

-Draft-

0 345 690 1,380 2,070 2,760  
Feet



Data Source: Base data from Chester County Geographic Information Services, 2018. Aerial data from DWRPC, 2015.

Disclaimer: This map is for illustrative purposes only and does not constitute a valid survey.

Map created: June 29, 2020

### Legend

Potential trails

Water Resources

Bodies of water

Riparian Buffer (100 ft)

Wetlands

Floodplain

Roads

Estimated Tax Parcels

### Contours

5 ft. interval

25 ft. interval

### Watershed

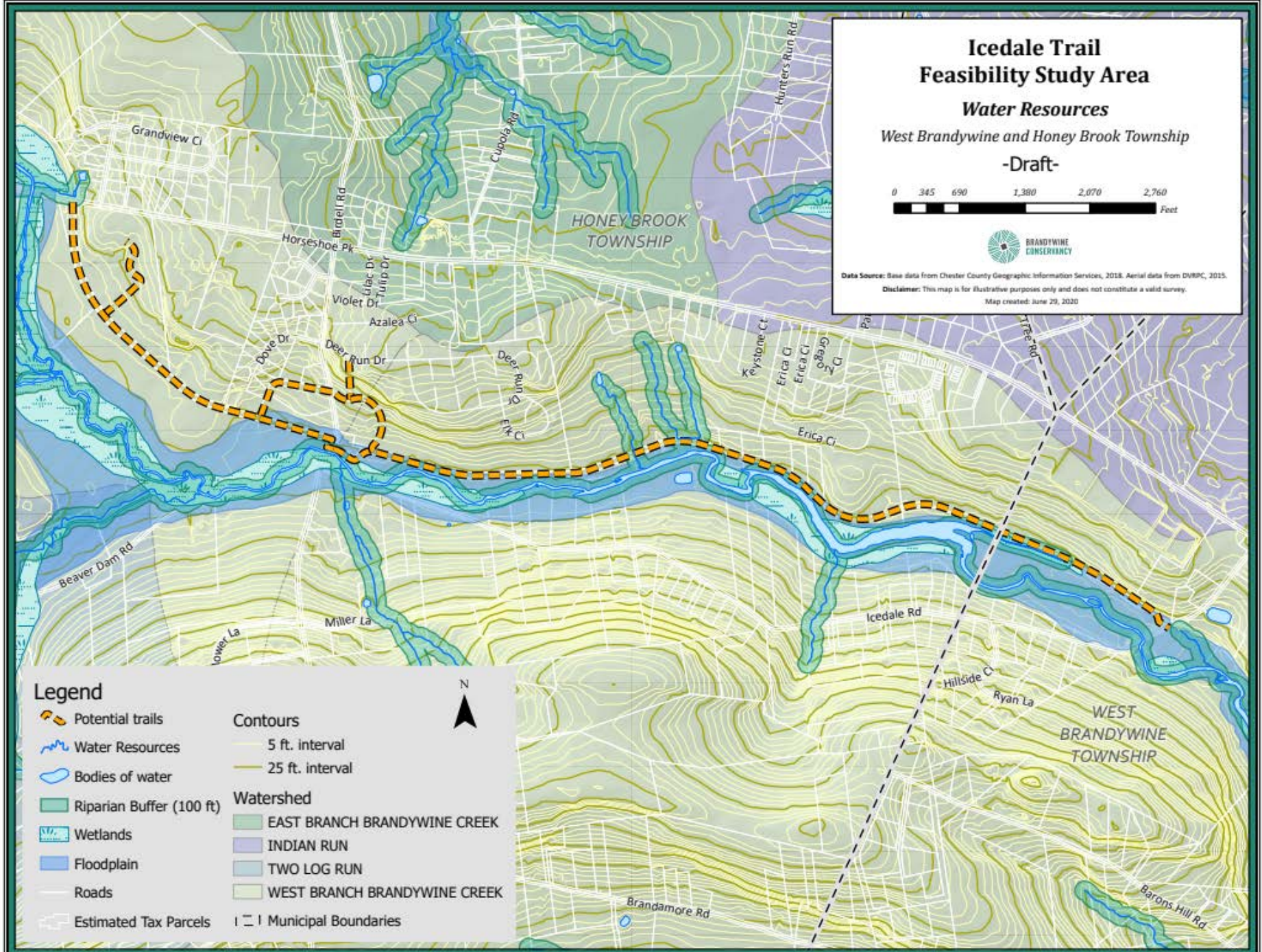
EAST BRANCH BRANDYWINE CREEK

INDIAN RUN

TWO LOG RUN

WEST BRANCH BRANDYWINE CREEK

Municipal Boundaries





# Icedale Trail Feasibility Study Area

## GPS Points

West Brandywine and Honey Brook Township

-Draft-



Data Source: Base data from Chester County Geographic Information Services, 2018. Aerial data from DNRC, 2016.  
Disclaimer: This map is for illustrative purposes only and does not constitute a valid survey.  
Map created September 28, 2020

## Legend

● GPS points

--- Municipal Boundaries

○ Bodies of water

~ Water Resources

--- Potential trails

Wetlands

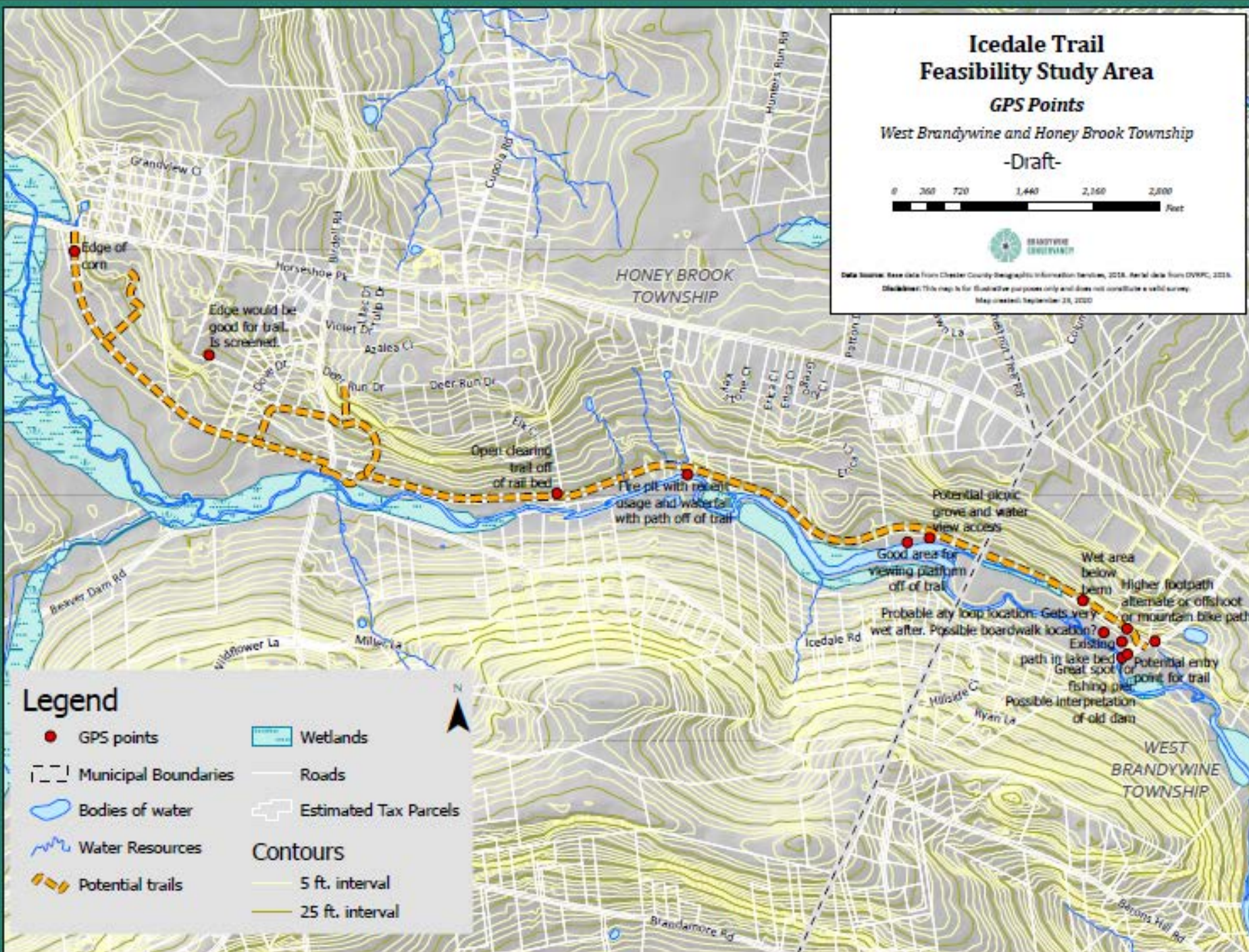
— Roads

Estimated Tax Parcels

## Contours

5 ft. interval

25 ft. interval







Left photo: Looking west down Icedale Road toward the road bridge and dam.  
Right photo: Looking north at the current steep entrance into Icedale Meadows.



Current view  
of the  
breached  
dam on the  
former  
Icedale Lake.  
Looking  
north toward  
Icedale  
Meadows.





Current view of Icedale Meadow looking north





## Another view of Icedale meadows





Existing conditions along the former railroad bed







# Existing trail conditions, continued

---

Possible area of  
existing ATV use





















# Icedale Trail Feasibility Study Area

## GPS Points

West Brandywine and Honey Brook Township

-Draft-



Data Source: Base data from Chester County Geographic Information Services, 2018. Aerial data from DNRC, 2016.  
Disclaimer: This map is for illustrative purposes only and does not constitute a valid survey.  
Map created September 28, 2020

## Legend

● GPS points

Wetlands

Municipal Boundaries

Roads

Bodies of water

Estimated Tax Parcels

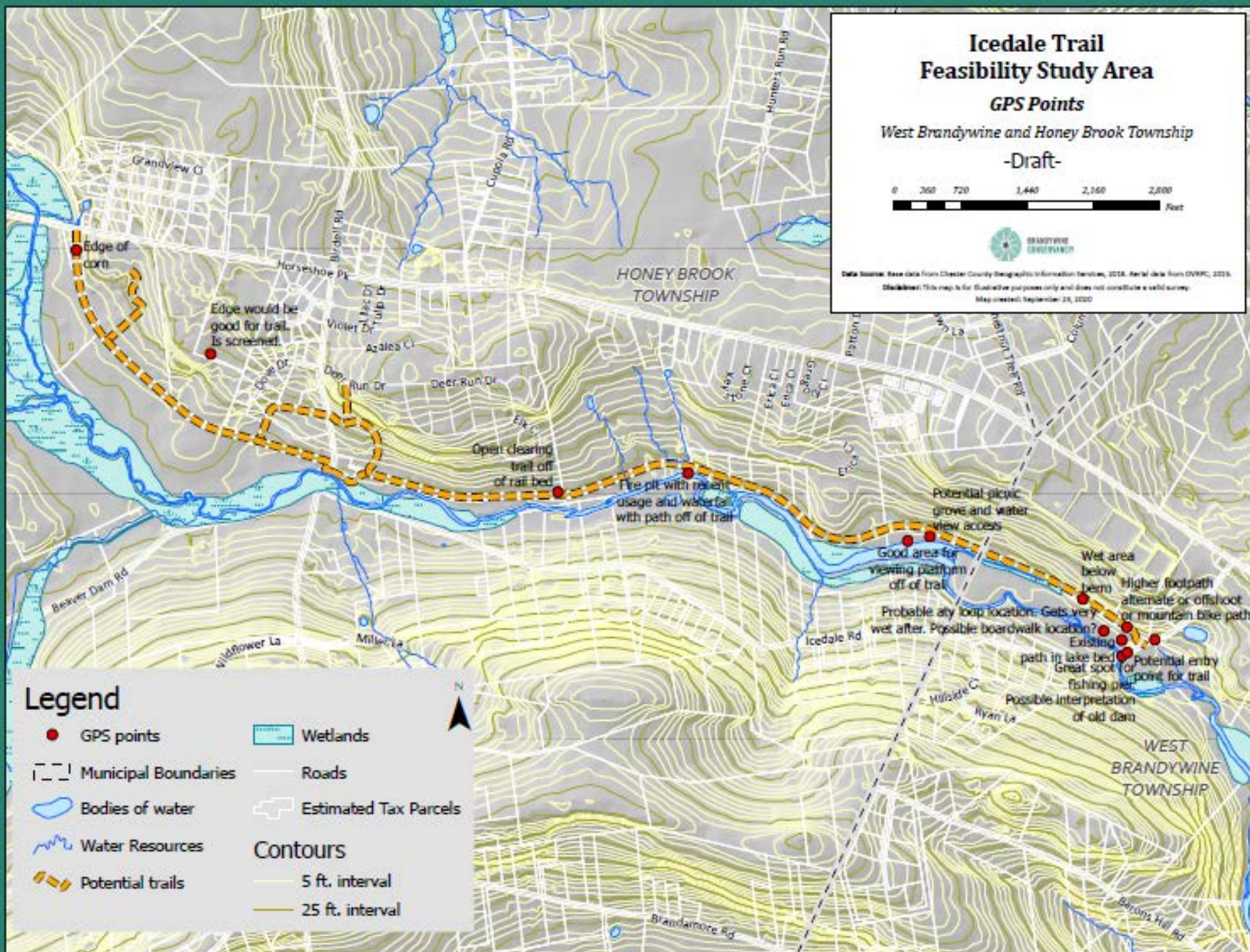
Water Resources

Contours

Potential trails

5 ft. interval

25 ft. interval







Looking north toward Route 322 adjacent to Living God Church







View continuing down the farm lane toward Birdell Road



Underneath  
the vehicular  
bridge over  
the  
Brandywine  
Creek at  
Birdell Road







# Trail Alignment Brainstorming



# Icedale Trail Feasibility Study Area Aerial

0 475 950 1,900  
Feet



Data Source: Base data from Chester County Geographic Information Services, 2018.  
Aerial data from DVRPC, 2015.

Disclaimer: This map is for illustrative purposes only  
and does not constitute a valid survey.

Map created: January 14, 2019

## Legend

- Tax parcels
- State/county property
- Municipal boundaries
- Water resources
- Bodies of water

Sources: Esri, DigitalGlobe, GeoEye, Earthstar Geographics, CNES/Airbus DS, USDA/USGS, AeroGRID, IGN, and the GIS User Community



# Icedale Trail Feasibility Study Area Aerial

0 475 950 1,900 Feet



Data Source: Base data from Chester County Geographic Information Services, 2018.  
Aerial data from DVRPC, 2015.  
Disclaimer: This map is for illustrative purposes only and does not constitute a valid survey.  
Map created: January 14, 2019

Living God Church

Heatherwood Retirement

Brandywine Terrace

West Nantmeal Township

West Brandywine Township

Icedale Lake

- Legend**
- Connector Trail
  - Alternative Trail
  - Main Trail - 2.62 mi
  - Tax parcels
  - State/county property
  - Municipal boundaries
  - Water resources
  - Bodies of water

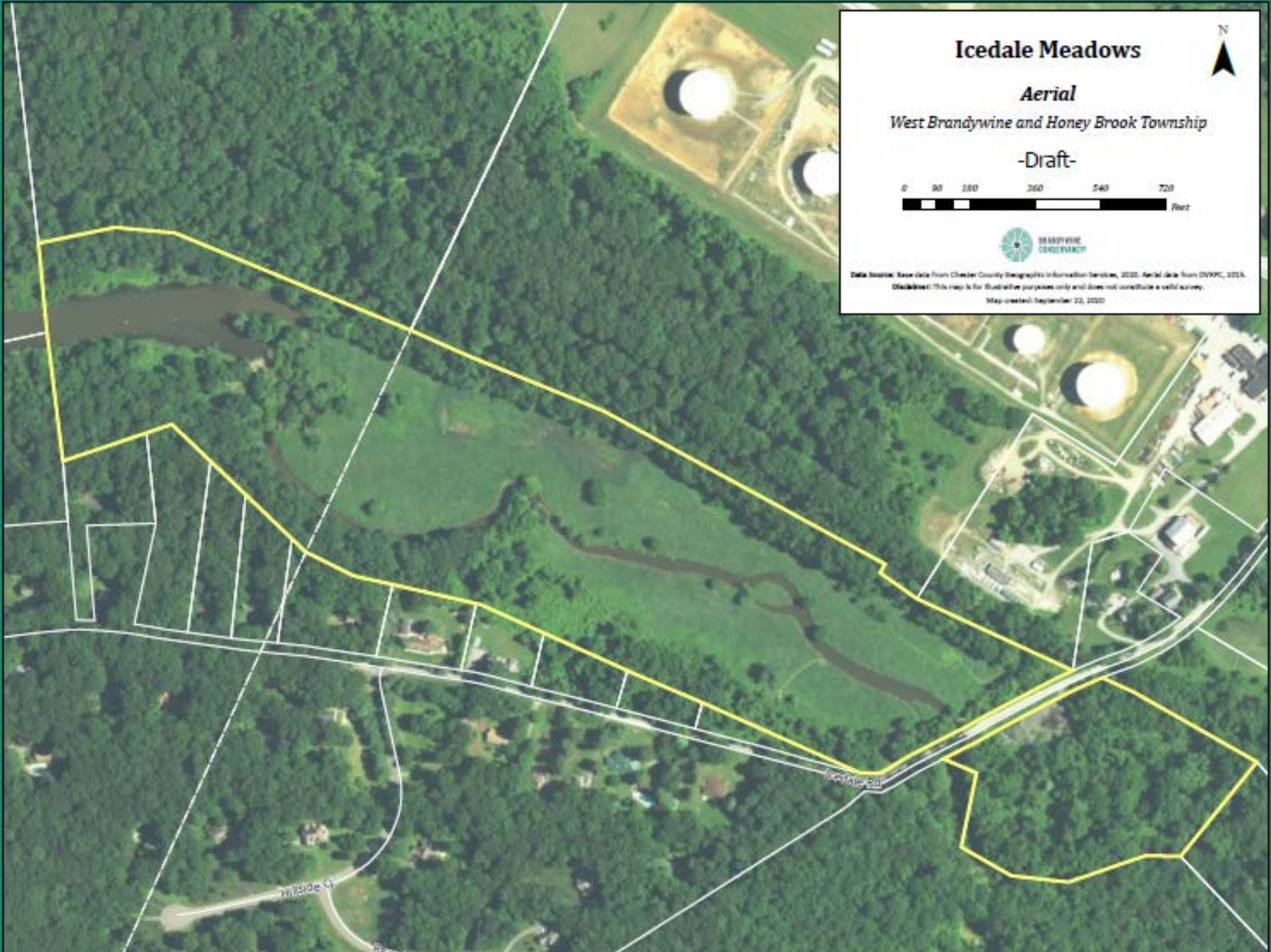
USDA FSA, GeoEye, Maxar, Source: Esri, DigitalGlobe, GeoEye, Earthstar Geographics, CNES/Airbus DS, USDA, USGS, AeroGRID, IGN, and the GIS User Community





# Icedale Meadows Amenities Brainstorming





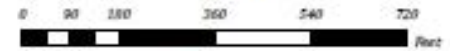
# Icedale Meadows



*Aerial*

*West Brandywine and Honey Brook Township*

**-Draft-**

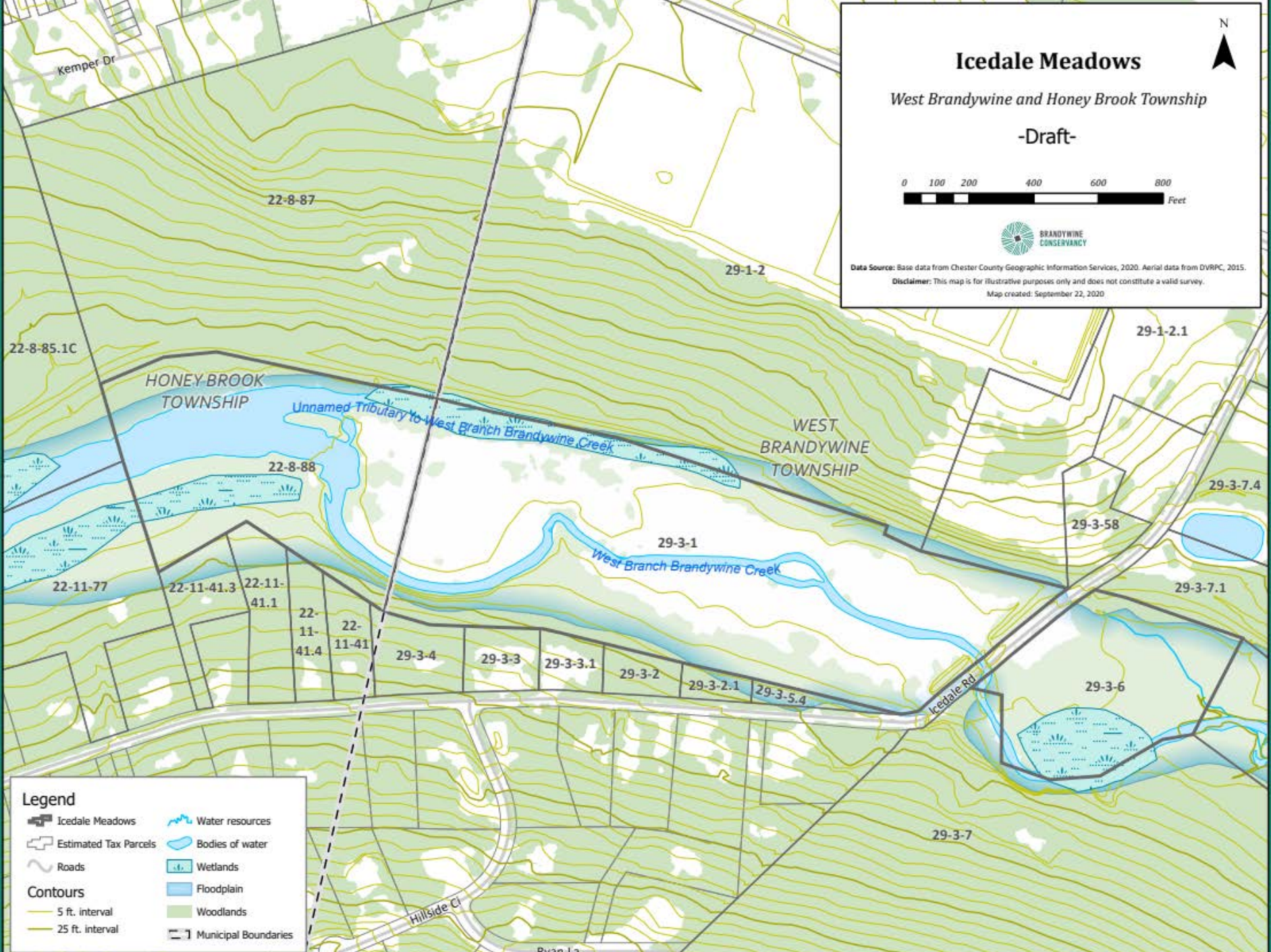


Data Source: Base data from Chester County Geographic Information Services, 2020. Aerial data from DNRC, 2019.

Disclaimer: This map is for illustrative purposes only and does not constitute a valid survey.

Map created: September 22, 2020





# Icedale Meadows

West Brandywine and Honey Brook Township

-Draft-

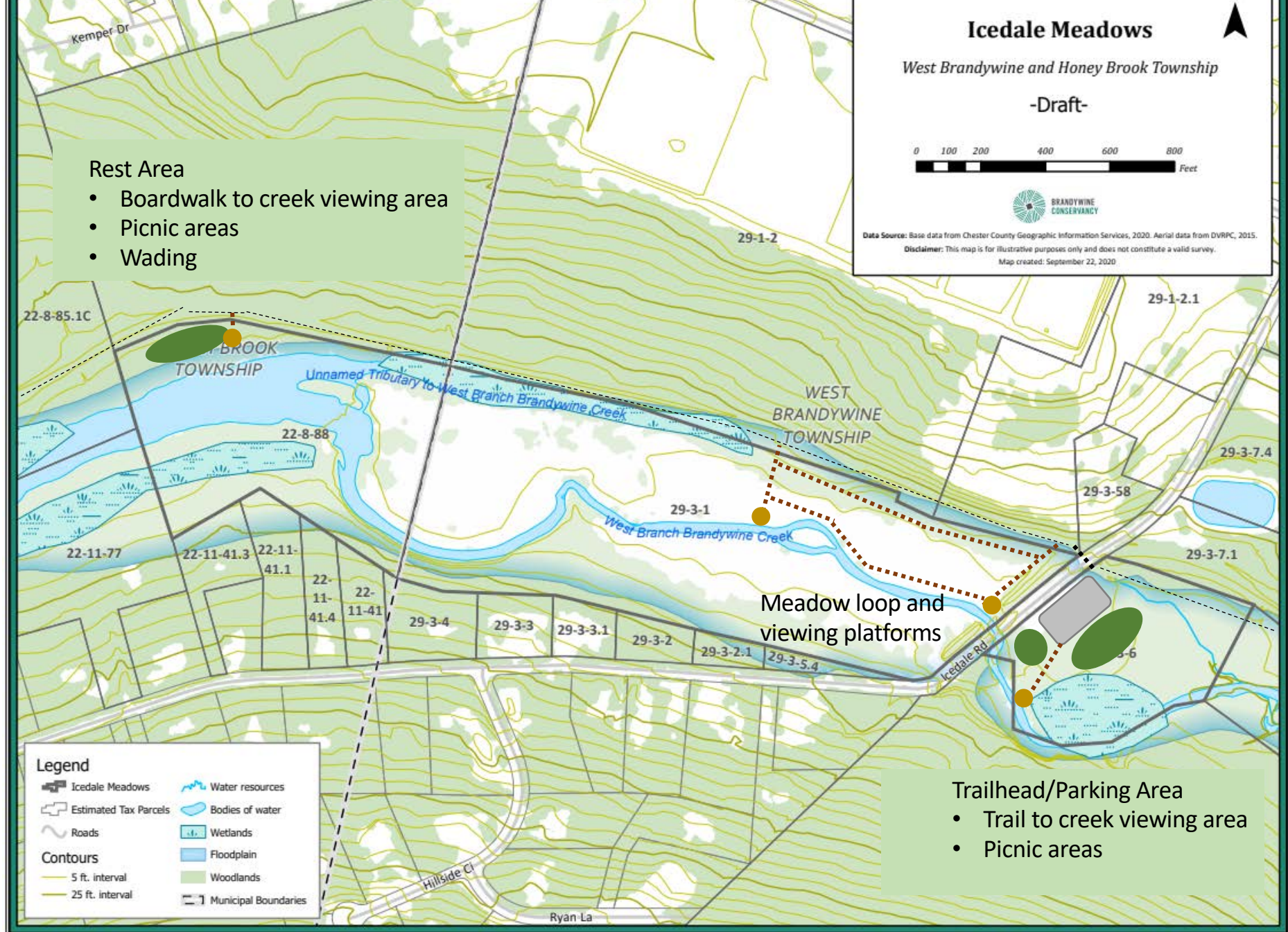


Data Source: Base data from Chester County Geographic Information Services, 2020. Aerial data from DVMPC, 2015.  
Disclaimer: This map is for illustrative purposes only and does not constitute a valid survey.  
Map created: September 22, 2020

## Legend

- Icedale Meadows
- Estimated Tax Parcels
- Roads
- Contours
  - 5 ft. interval
  - 25 ft. interval
- Water resources
- Bodies of water
- Wetlands
- Floodplain
- Woodlands
- Municipal Boundaries







Next Steps: Public Meeting, alignment evaluation, Icedale Meadows concept, property owner coordination.

Icedale Trail Feasibility Study - Honey Brook Township												
Project Tasks and Timeline												
Tasks	Month 1	Month 2	Month 3	Month 4	Month 5	Month 6	Month 7	Month 8	Month 9	Month 10	Month 11	Month 12
<b>Project Tasks</b>												
1 Project Management/Administration												
2 Existing Conditions Inventory and Data Collection												
3 Alignment Evaluation and Property Owner Engagement												
4 Icedale Trail Concept Plan												
5 Icedale Park Concept Plan												
6 Implementation Plan and Funding Strategy												
7 Public Participation												
8 Draft and Final Reports												
<b>Public Participation</b>												
Study Advisory Committee Meetings	SAC 1		SAC 2				SAC 3			SAC 4		
Public Meetings				PM 1				PM 2			PM 3	
Property Owner Coordination Meetings												
PA Fish and Boat Coordination Meetings												
Project Updates and Communication												
Online Community Engagement												
<b>Deliverables</b>												
Draft Report												
Final Report												